



ADB approved cabinet runs for clinical rooms

Stirling[®]
MEDICAL and SCIENTIFIC

Providing compliant, efficient
and modern clinical environments



ADB approved cabinet runs for clinical rooms

The following pages show examples of the typical cabinet layouts and styles that are found in the most frequently repeated hospital clinical rooms.

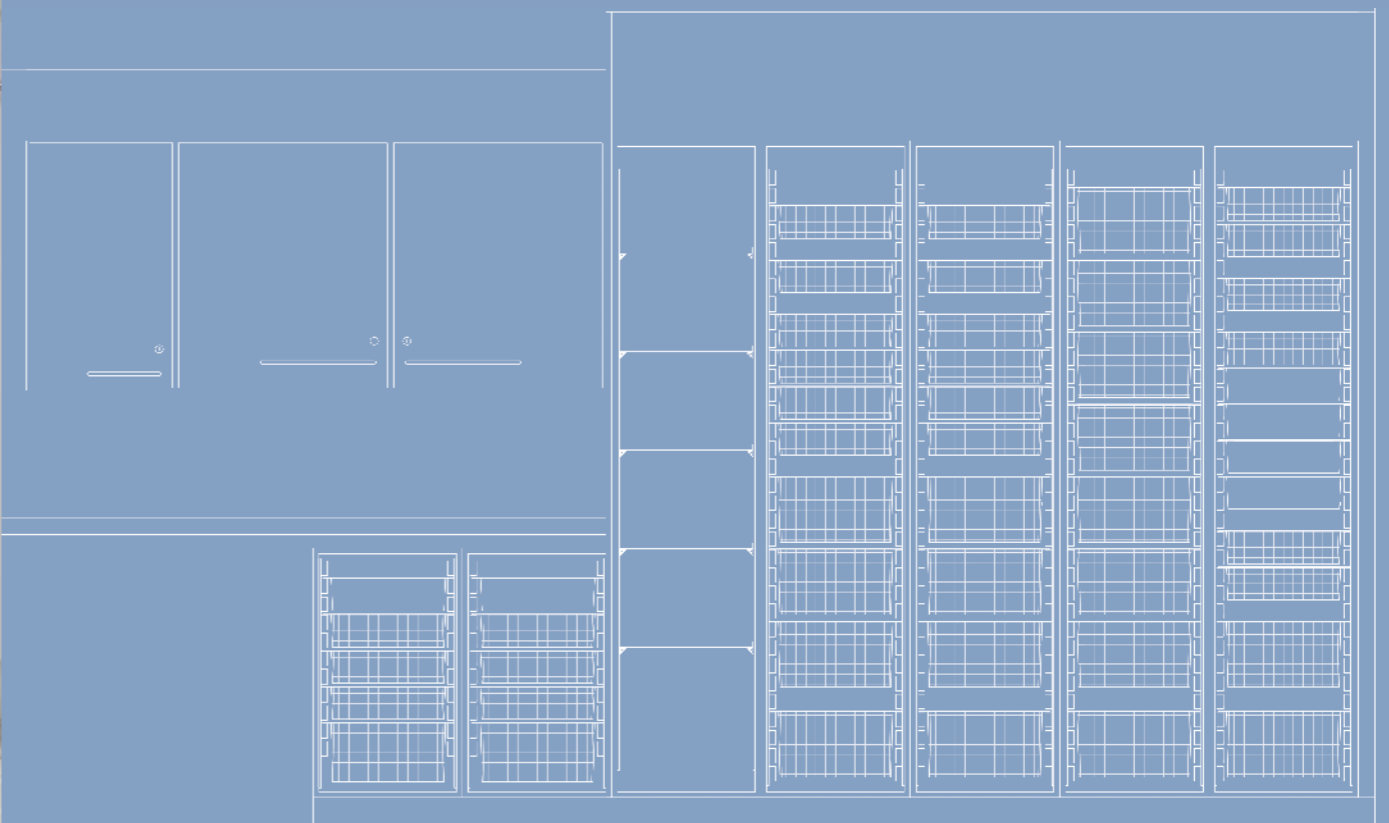
Specifically for this publication, the layout drawings have been simplified to just show the cabinet runs without the other associated products or furniture (eg couches, IPS units, trolleys etc) to make it easier to identify the best cabinet options and typical space required.

A brief summary of the components included in the runs is shown on the right hand side of the page to tie in with the elevation drawing on the left.

Many of these complete cabinet runs are available on our **£10K/15 Day delivery promise** in the Systeméd standard White colour (this currently excludes cabinets with glass doors).

CAD drawings and BIM model downloads are available for every run along with individual item models with accessory options and full room sets.

Please enquire for more information.





Contents

Pharmacy Dispensary Room	05
Beverage Point	07
Staff Kitchen	09
Catheter Laboratory	11
Consulting Room	13
Consulting Examination Room	15
Treatment/Examination Room	17
Anaesthetic Room	19
Dirty Utility (Theatre style)	21
Theatre Store	23
Cleaners' Room	25
Dirty Utility	27
Ward Store Room	29
Ward Store Room with work surface	31
Clean Utility with drug storage	33

Look out for the £10k/15 day delivery promise symbol



The £10K/15 Day delivery promise

A large range of White Systeméd cabinets and associated items up to the value of £10k can be supplied and delivered to site within 15 working days from order!

Pharmacy Dispensary Room

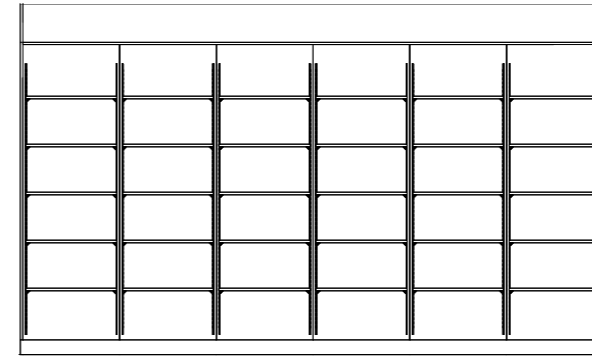


The Pharmacy Dispensary could be described as the nerve centre of a hospital and needs to be functional and efficient with clear workflows.

Larger hospital improvements to the pharmacy will often include the installation of a robot and planning will be needed to create benching and cabinets to help maximise the benefits available.

The photograph above is from a recent installation at a private hospital and shows the island with the Esplan pharmacy base cabinets included in the PHA001-2 set.

PHA001-1: Tall cabinets



PHA001-1: Tall cabinets 4000mm run length

6 No. Systeméd tall cabinets with shelves

Fillers, sloping tops and plinth sets to suit layout shown. Open fronted

PHA001-2: Base and wall cabinets 3600mm and 1000mm run lengths

9 No. Systeméd cabinets: x4 base, x3 wall, x2 CD safes

1 No. worktop: 1655mm x 600mm, WK30 style with lay-on rear upstand

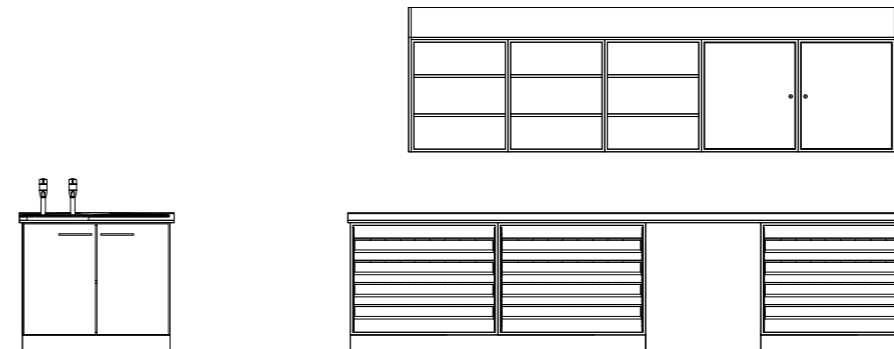
1 No. sink: stainless steel lay-on sink with drainer

1 No. tap set: single lever mixer

Assortment of Esplan pharmacy accessories and shelves

Fillers, sloping tops and plinth sets to suit layout shown. Open fronted, sink unit with solid doors

PHA001-2: Base and wall cabinets



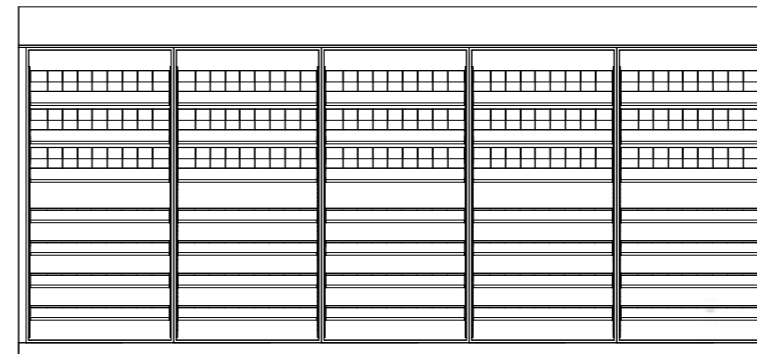
PHA001-3: Tall cabinets 5100mm run length

5 No. Systeméd pharmacy tall cabinets

Assortment of Esplan pharmacy accessories and shelves

Fillers, sloping tops and plinth sets to suit layout shown. Open fronted

PHA001-3: Tall cabinets



PHA001-5: Island bench Island top, 3900mm x 950mm

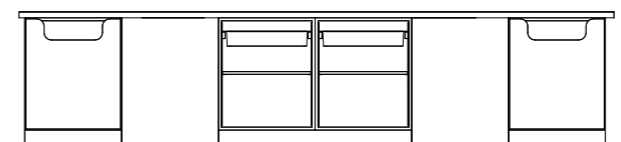
8 No. Systeméd base cabinets

1 No. worktop: 3900 x 950mm, WKT30 style

Assortment of Esplan pharmacy accessories and shelves

Plinth sets to suit layout shown. Open fronted, bin units with solid doors

PHA001-5: Island bench (both sides are identical)



Cabinet room sets: BEV001

Beverage Point

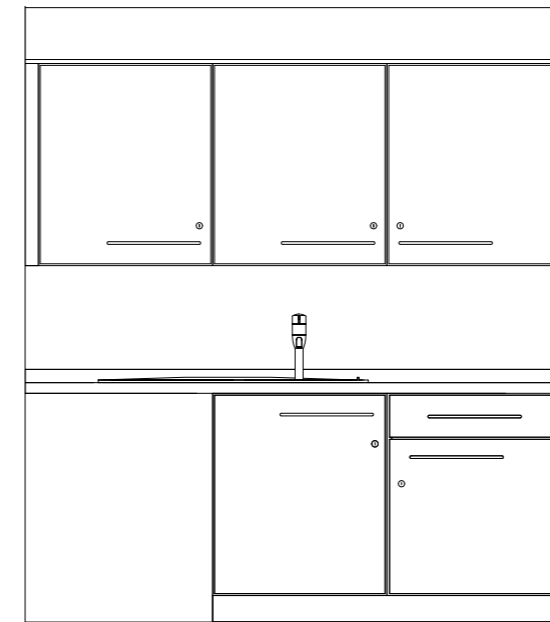


Sometimes referred to as a 'Mini Kitchen', the Beverage Point can be conveniently placed in a small alcove in corridor situations or even in large offices.

This is simply an area for tea and coffee for staff and patients and may include space for a fridge.

The Beverage Point above is from St Thomas' Hospital showing standard cabinets with coloured door fronts.

BEV001-1: Beverage Point



BEV001-1: Beverage Point 2000mm run length

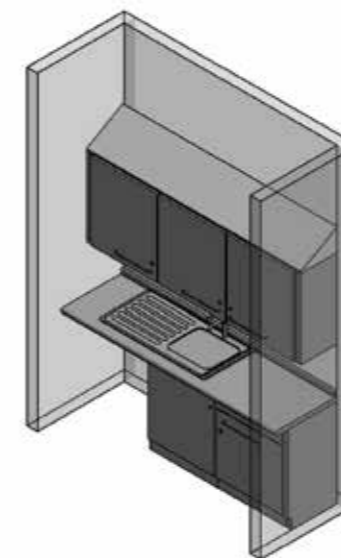
5 No. Systeméd cabinets with shelves:
x3 wall, x2 base

1 No. worktop: 2m x 600mm, WK15 style
with molded rear upstand

1 No. sink: stainless steel sink with drainer

1 No. tap set: single lever mixer

**Fillers, sloping top and plinth set to suit
layout shown. Solid doors**



Cabinet room sets: BEV002

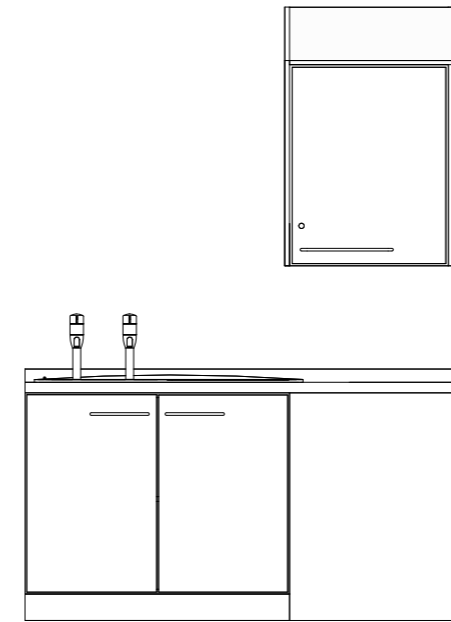
Staff Kitchen



The Staff Kitchen will differ in size depending on the specific activities in the department and whether it will be for staff only or for patient catering as well.

The photograph above is taken from St Mary's Hospital in Portsmouth and sits alongside the staff admin areas.

BEV002-1: Staff Kitchen



BEV002-1: Staff Kitchen 1655mm run length

2 No. Systeméd cabinets with shelves:
x1 base, x1 wall

1 No. worktop: 1655mm x 600mm, WK15 style with molded rear upstand

1 No. sink: stainless steel sink with drainer

1 No. tap set: single lever mixer

Fillers, sloping top and plinth set to suit layout shown. Solid doors

BEV002-2: Staff Kitchen 2800mm run length

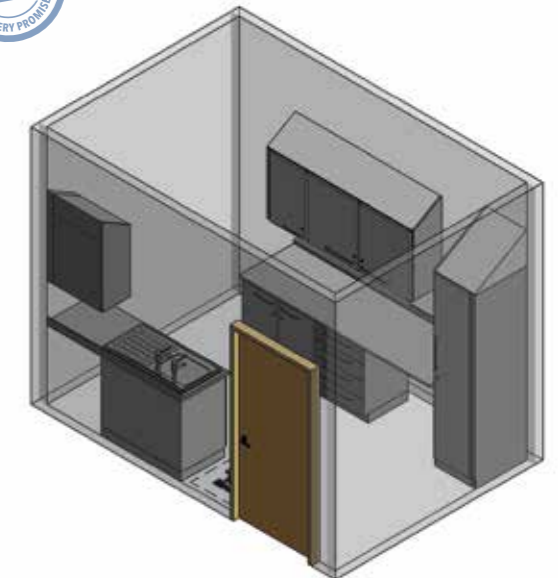
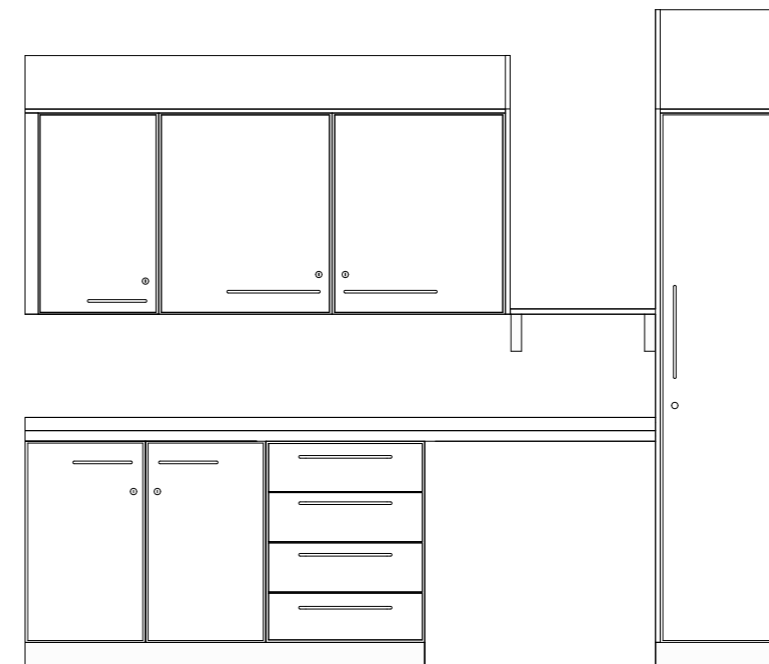
7 No. Systeméd cabinets with shelves:
x1 tall, x3 base, x3 wall

1 No. worktop: 2300mm x 700mm, WK15 style with molded rear upstand

1 No. 500mm x 400mm shelf

Fillers, sloping top and plinth set to suit layout shown. Solid doors

BEV002-2: Staff Kitchen



Cabinet room sets: CAT001

Catheter Laboratory

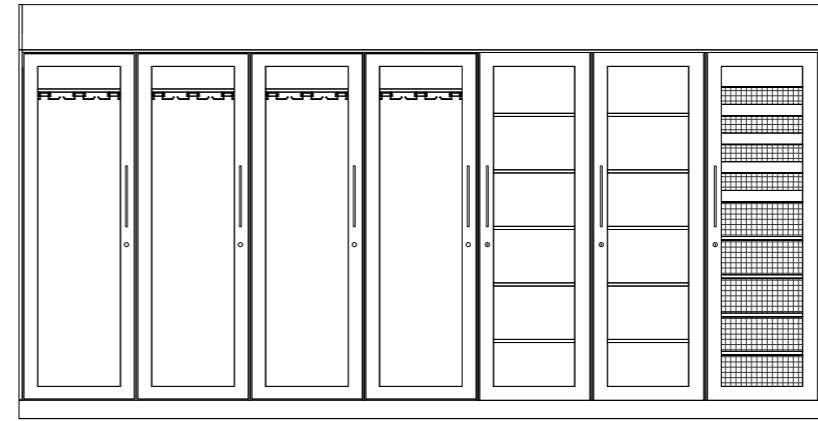


Having equipment well organised and in exactly the right place can make the difference between life and death in this important area of the hospital.

There is a full range of Systeméd components specifically developed with professional help from consultants to ensure that catheters and associated products are correctly stored and easily accessible to make this room as efficient as possible.

The photograph above is taken from the New Louisa Martindale Hospital in Brighton, completed in 2023 as part of the New Hospitals programme.

CAT001-1: Tall storage run



CAT0001-1: Tall storage run
4655mm run length

7 No. tall Systeméd cabinets

Assortment of accessories and shelves as indicated

Fillers, sloping top and plinth set to suit layout shown. Glass doors

CAT0001-2: Storage and worktop area
3310mm run length

7 No. Systeméd cabinets: x1 tall, x4 base, x2 wall

Assortment of accessories and shelves as indicated

1 No. worktop: 2650mm x 600mm, WK15 style with molded rear upstand

1 No. tap set: single lever mixer

Fillers, sloping top and plinth set to suit layout shown. Solid and glass doors

CAT001-4: Storage and worktop area
2660mm run length

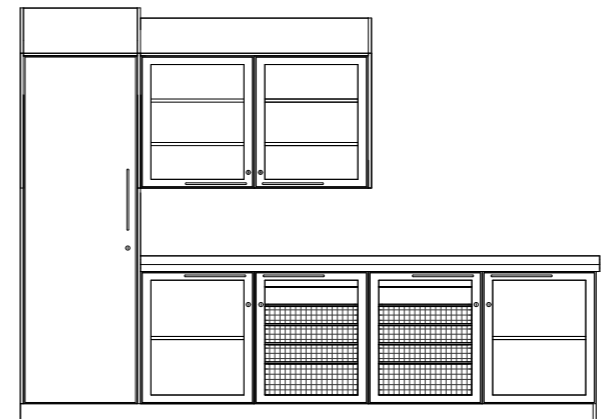
8 No. Systeméd cabinets: x4 base, x4 wall

Assortment of accessories and shelves as indicated

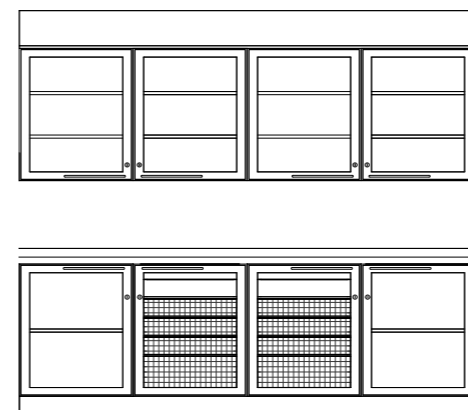
1 No. worktop: 2675mm x 600mm, WK15 style with molded rear upstand

Fillers, sloping top and plinth set to suit layout shown. Glass doors

CAT001-2: Storage and worktop area



CAT001-4: Storage and worktop area



Cabinet room sets: CON001

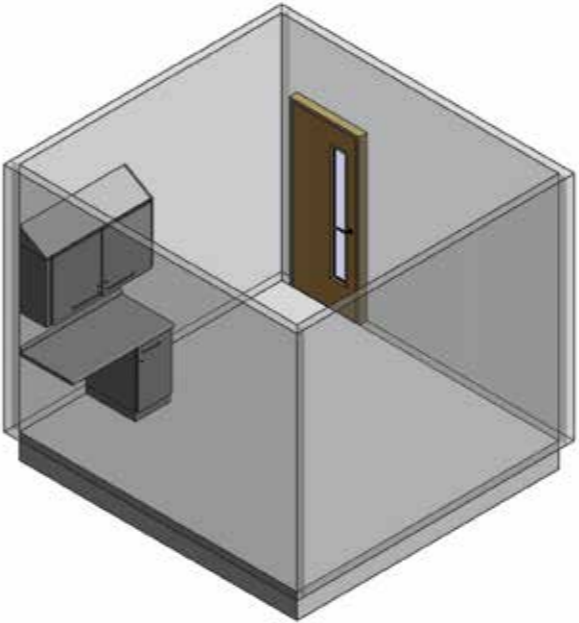
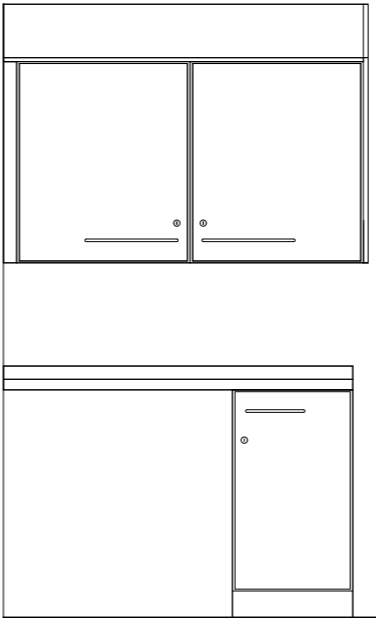
Consulting Room



This type of Consulting Room has no patient couch and provides for patient consultation, patient interviews and tests. Typical size: 10-12m².

The photograph above is from a private hospital Consulting Room in Harley Street, London and features wood effect cabinets with code locks.

CON001-3: Consulting Room



CON001-3: Consulting room
1330mm run length

3 No. Systeméd cabinets: x2 wall x1 base

1 No. worktop: 1380mm x 600mm, WK15 style with molded rear upstand

Fillers, sloping top and plinth set to suit layout shown. Solid doors

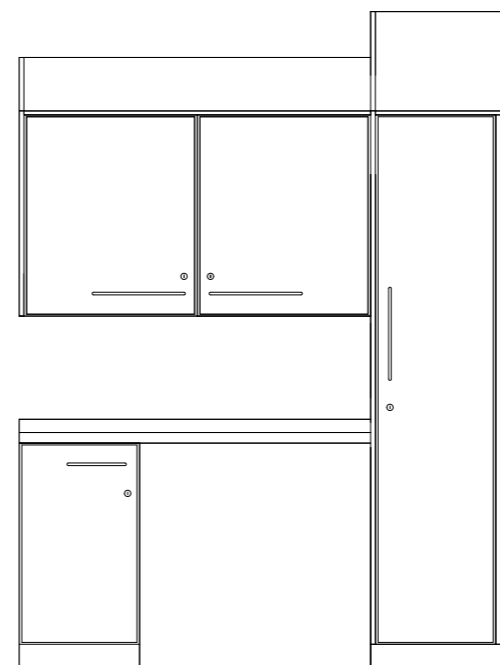
Consulting Examination Room



This type of Consulting Room includes space for a patient treatment couch/chair. Typical size: 15m². Provides for patient consultation, patient examination and tests.

The photograph above is from a private hospital Consulting Room in Harley Street, London and features wood effect cabinets with code locks.

CON002-1: Consulting Examination Room



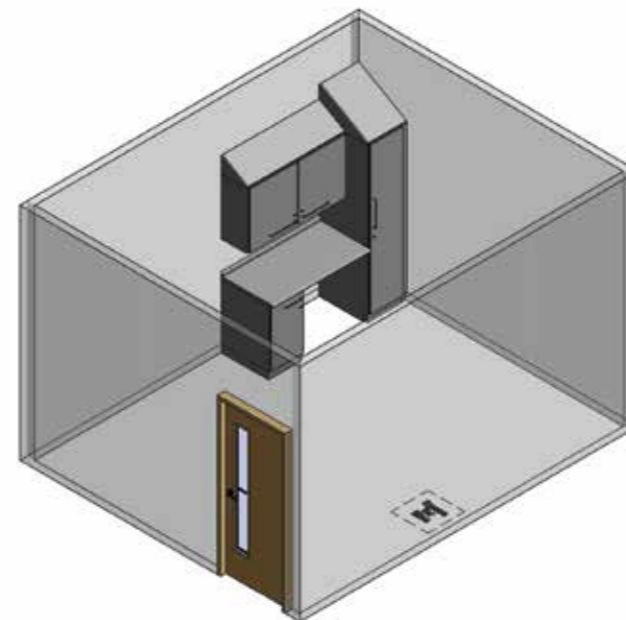
CON002-1:
Consulting Examination Room
1850mm run length

4 No. Systeméd cabinets: x1 tall, x2 wall, x1 base

Assortment of HTM71 accessories and shelves

1 No. worktop: 1330mm x 600mm, WK15 style with molded rear upstand

Fillers, sloping top and plinth set to suit layout shown. Solid doors



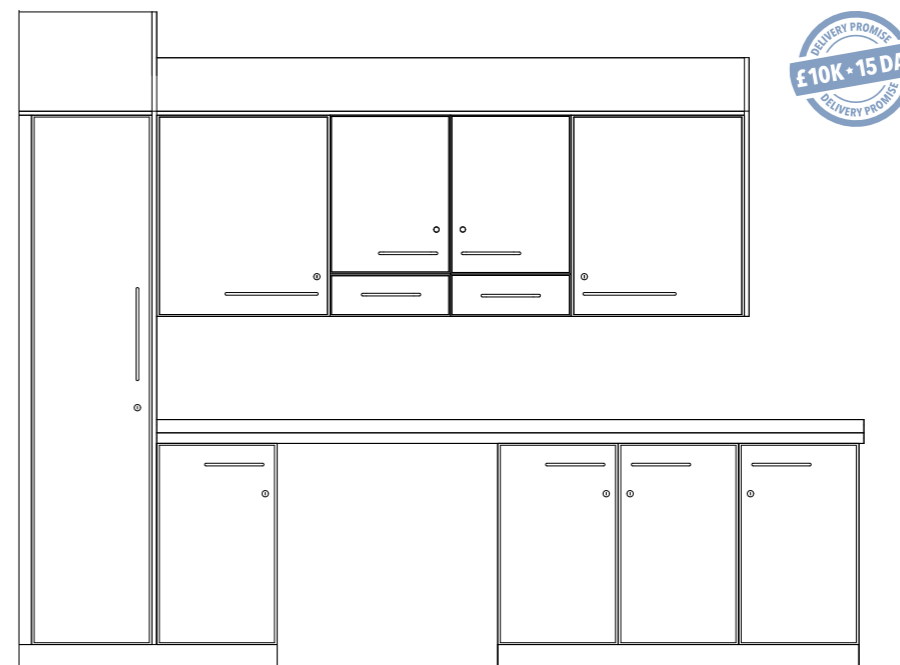
Treatment/Examination Room



This type of Treatment or Examination Room includes a space for a patient treatment couch or chair. Typical size: 16m². Provides for patient examination and minor procedures. Storage and preparation worktop is close at hand with provision for controlled drug storage.

The photograph above shows a recent installation which includes a patient changing area with locker storage and changing seat.

CON003-1: Main storage run



CON003-1: Main storage run Treatment/Examination Room 2950mm run length

9 No. Systeméd cabinets: x1 tall, x4 wall, x4 base

Assortment of HTM71 accessories and shelves

1 No. worktop: 2695mm x 600mm, WK15 style with molded rear upstand

Fillers, sloping top and plinth set to suit layout shown. Solid doors

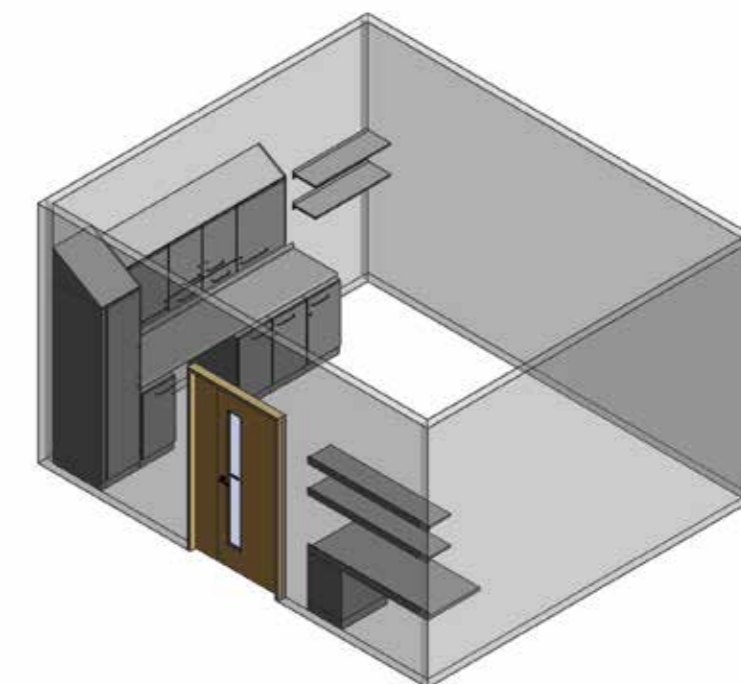
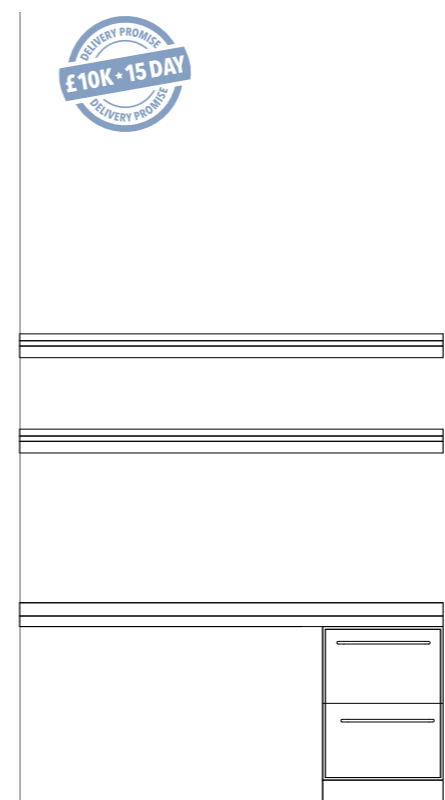
CON003-4: Desk area Treatment/Examination Room 2950mm run length

1 No. Systeméd 2-drawer low base cabinet with plinth set to suit

1 No. worktop: 1500mm x 600mm, WKT15 style with molded rear upstand

2 No. 1500mm x 300mm Easyrail clinical shelves

CON003-4: Desk area



Cabinet room sets: THE001

Anaesthetic Room

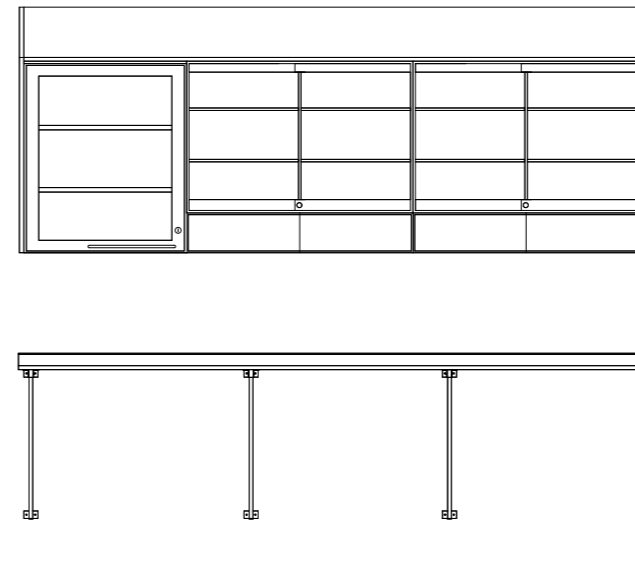


Anaesthetic rooms are a vital part of the hospital theatre department and it is important to design this room with the theatre staff to allow for existing workflows and to provide for any improvements.

Space to move around the patient and to access necessary drugs and equipment can be quite difficult with the number of persons in the room during a procedure, so efficient storage systems are essential. A well ordered layout will inspire confidence and reduce anxiety.

The photograph above is from the new Theatres at the Louisa Martindale Hospital in Brighton.

THE001-1: Anaesthetic Room



THE001-1: Anaesthetic Room 2550mm run length

3 No. Systeméd wall cabinets (x4 swing glide drawers)

1 No. worktop: 2550mm x 600mm, WK30 style with lay-on rear upstand

Fillers, sloping top, plinths and worktop support bracket to suit layout shown. Hinged and sliding glass doors

THE001-3: Anaesthetic Room 2950mm run length

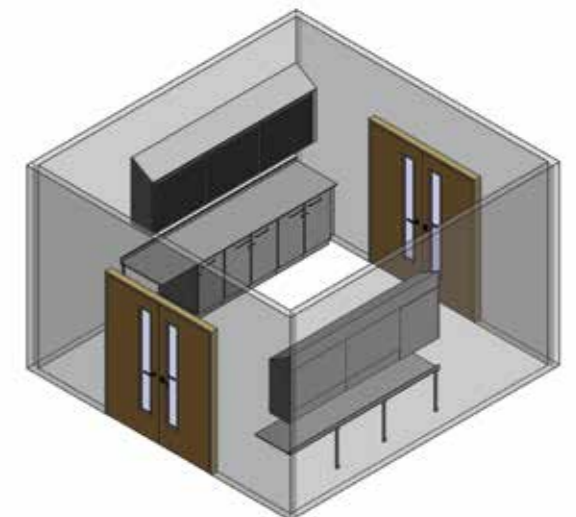
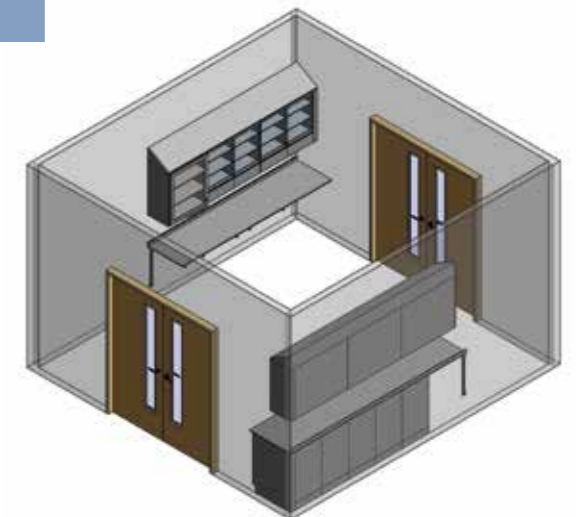
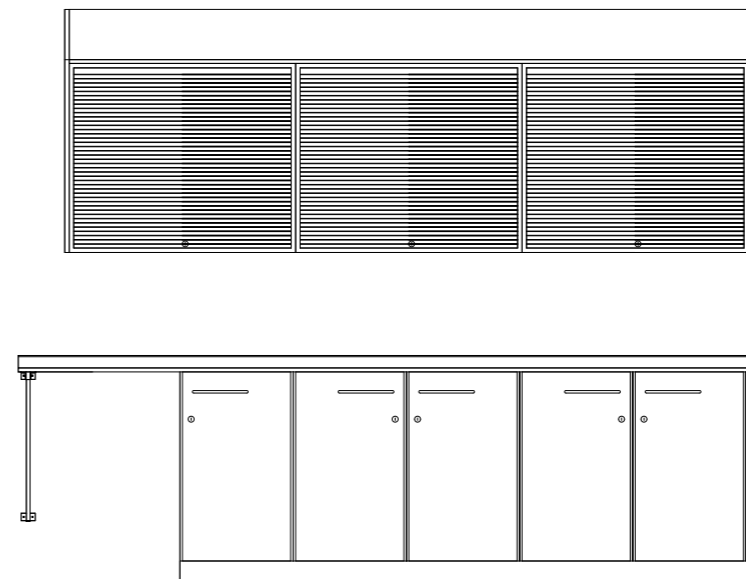
8 No. Systeméd cabinets: x3 wall, x5 base

Assortment of HTM71 accessories and shelves

1 No. worktop: 2950mm x 600mm, WK30 style with lay-on rear upstand

Fillers, sloping top, plinths and worktop support bracket to suit layout shown. Tambour and solid doors

THE001-3: Anaesthetic Room



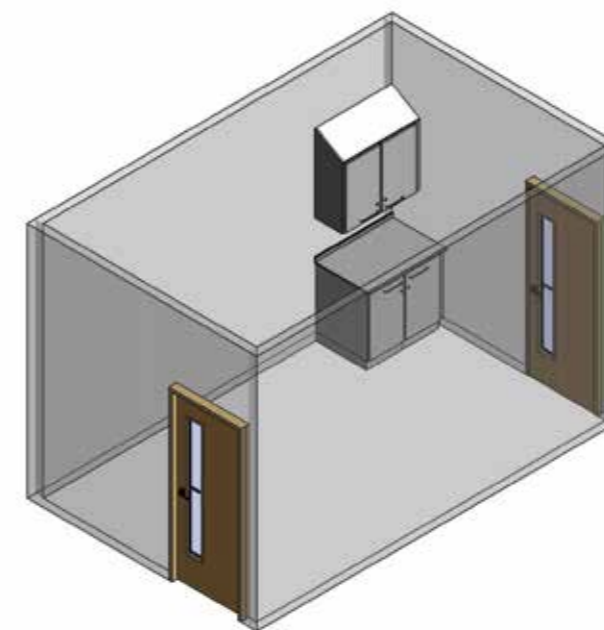
Dirty Utility (Theatre style)



A Dirty Utility room that is adjacent to a theatre is a through room for the removal of waste from the theatre area. This room may also accommodate some cleaning activities.

This room may also accommodate some cleaning equipment and materials, and cabinets are used to help keep them contained.

THE002-1: Dirty Utility (Theatre style)



THE002-1: Dirty Utility (Theatre style)
1000mm run length

4 No. Systeméd cabinets: x2 wall, x2 base

1 No. worktop: 980mm x 600mm, WK30 style with lay-on rear upstand

Fillers, sloping tops to suit layout shown.
Solid doors

Theatre Store

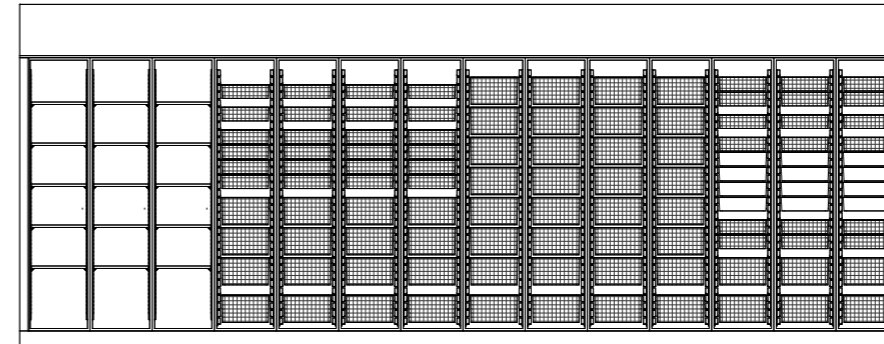


The function of the Theatre Store room and type of storage equipment used will vary according to how the Theatres have been designed and whether there are smaller storage areas or one large central store.

Every Theatre will require some HTM71 high density storage modules for the smaller items and packs. The Systeméd Glass doors provide good visibility to items stored and is a popular choice if doors are required.

The photograph above is from a new hospital development in one of the smaller Theatre storage rooms.

THE003-2: Theatre Store



THE003-2: Theatre Store
650mm run length

14 No. Systeméd open tall cabinets

Assortment of HTM71 accessories as indicated

Fillers, sloping tops and plinth sets to suit layout shown. Open fronted

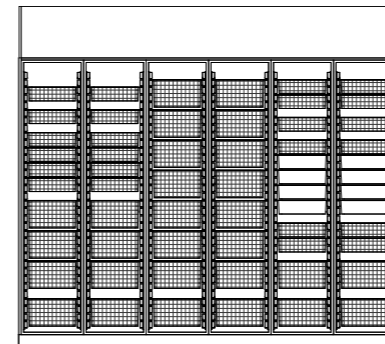
THE003-4: Theatre Store
2800mm run length

12 No. Systeméd open tall cabinets, (arranged back-to-back)

Assortment of HTM71 accessories as indicated

Fillers, sloping tops and plinth sets to suit layout shown. Open fronted

THE003-4: Theatre Store



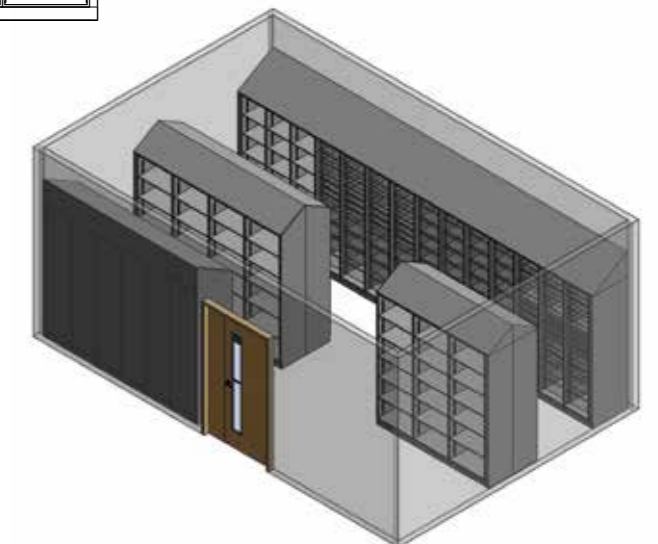
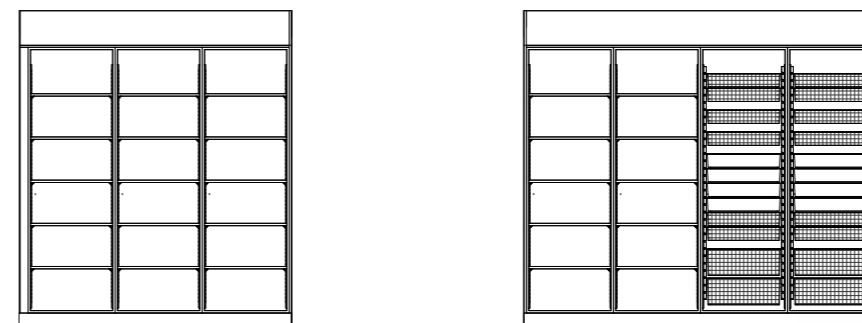
THE003-5: Theatre Store
2000mm and 2700mm run lengths

14 No. Systeméd open tall cabinets, (arranged back-to-back)

Assortment of HTM71 accessories as indicated

Fillers, sloping tops and plinth sets to suit layout shown. Open fronted

THE003-5: Theatre Store



Cabinet room sets: WAR004

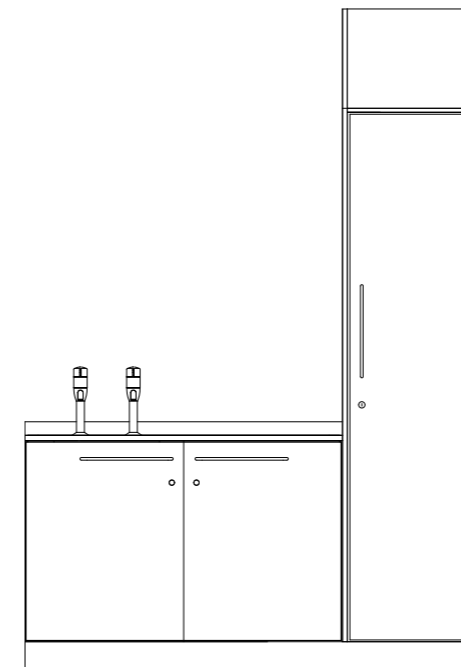
Cleaners' Room



The Cleaners' Room is usually designed to incorporate the Hospital trusts' cleaning procedures and is a necessary area in every department and ward.

Tall cabinets are useful for the storage of cleaning equipment along with a base unit to house a full size lay-on cleaners sink.

WAR004-1: Cleaners' Room



WAR004-1: Cleaners' room
1850mm run length

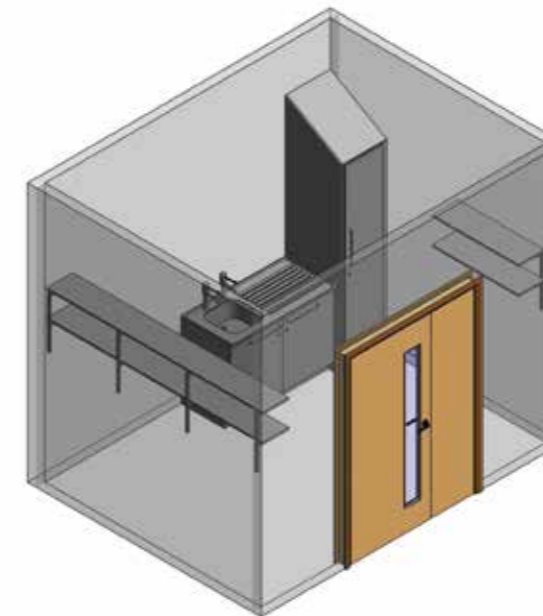
3 No. Systeméd cabinets: x2 base, x1 tall

1 No. worktop: 1330mm x 600mm, WK15 style with molded rear upstand

1 No. sink: stainless steel sink with drainer, no overflow

1 No. tap set: single lever mixer

Fillers, sloping tops and plinth sets to suit layout shown. Solid doors



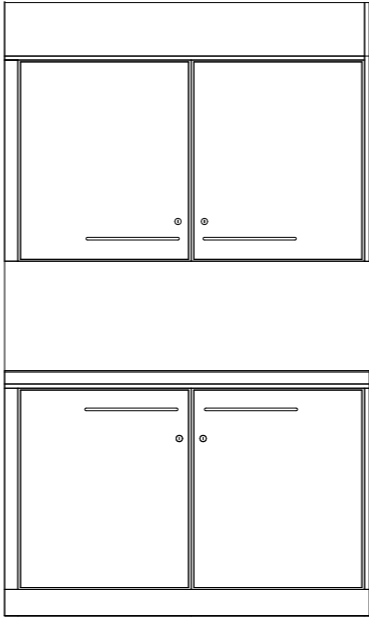
Dirty Utility



The Dirty Utility or Sluice Room is found in almost every department of every hospital. Care should be taken when laying out this room to incorporate existing methods and workflows.

Cabinets included in this room will normally just have shelves for bulky items and boxes.

WAR005: Dirty Utility

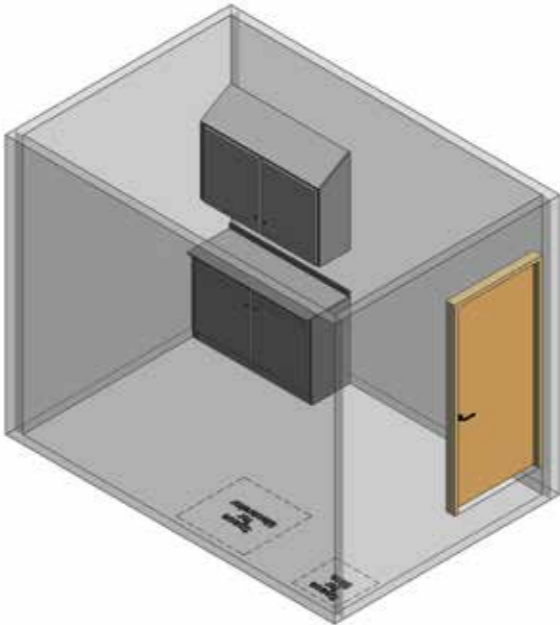


WAR005: Dirty Utility
1000mm run length

4 No. Systeméd cabinets: x2 base, x2 wall

1 No. worktop: 980mm x 700mm, WK15 style with molded rear upstand

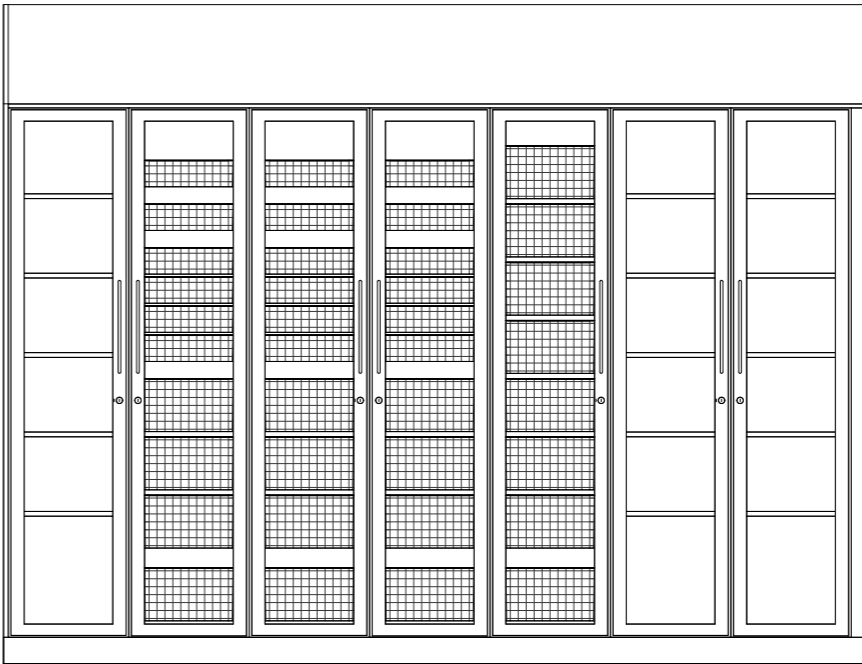
Fillers, sloping tops and plinth sets to suit layout shown. Solid doors



Ward Store Room



WAR006: Ward Store Room

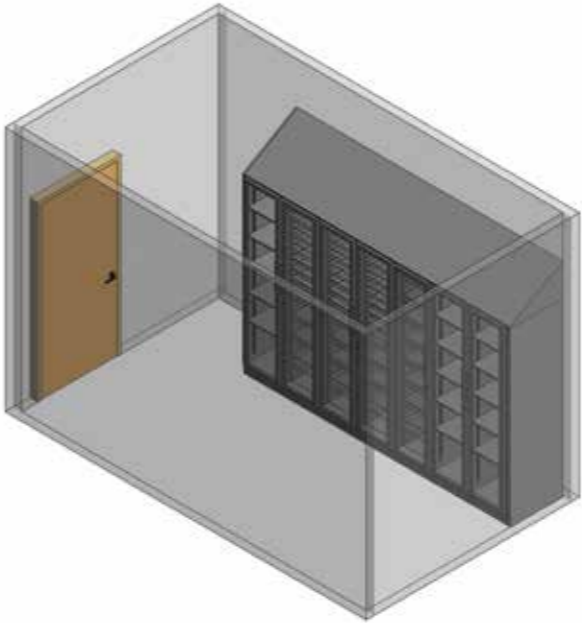


WAR006: Ward Store Room
3255mm run length

7 No. Systeméd open tall cabinets

Assortment of HTM71 accessories as indicated

Fillers, sloping tops and plinth sets to suit layout shown. Glass doors



Most wards require a room for the storage of bulky boxes, accessories and equipment.

A mixture of HTM71 storage modules and shelving will provide efficient storage. Systeméd toughened glass doors are a popular choice and help transform these rooms to a smart looking efficient storage area with stock more easily visible. Stock labels are inside the cabinets and behind the doors making it neater and easier for cleaning. Typical size 10m².

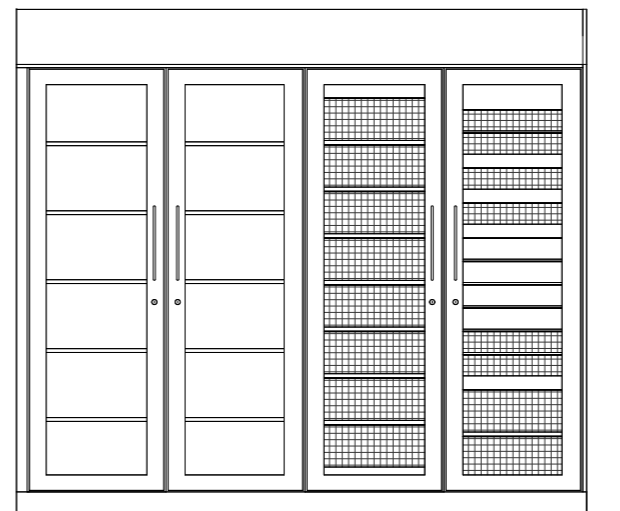
Ward Store Room with work surface



Most wards require a room for the storage of bulky boxes and equipment such as trolleys. This room has a work surface and has more storage than room WAR006 and will often double up as a ward Clean Utility room for small medical preparations.

The photo above is from the Royal Sussex County Hospital in Brighton.

WAR007-2: Tall cabinets



WAR007-2: Tall cabinets
2700mm run length

4 No. Systeméd tall cabinets

Assortment of HTM71 accessories and shelves

Fillers, sloping tops and plinth sets to suit layout shown. Glass doors

WAR007-4: Tall, base and wall cabinets
4200mm run length

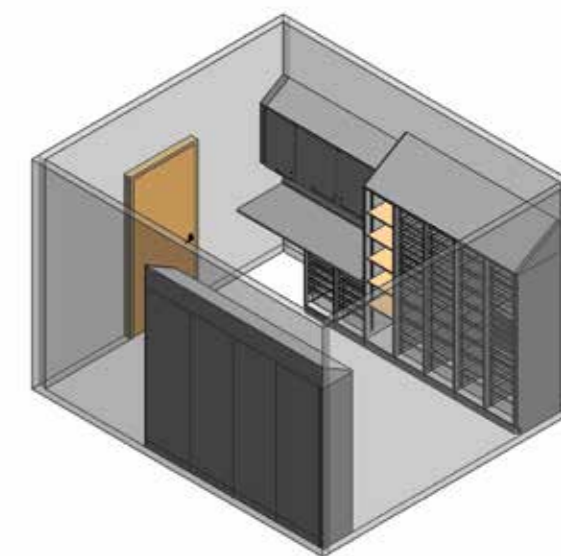
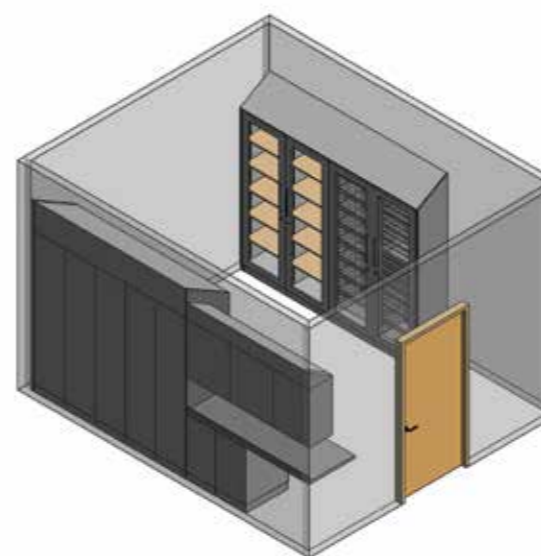
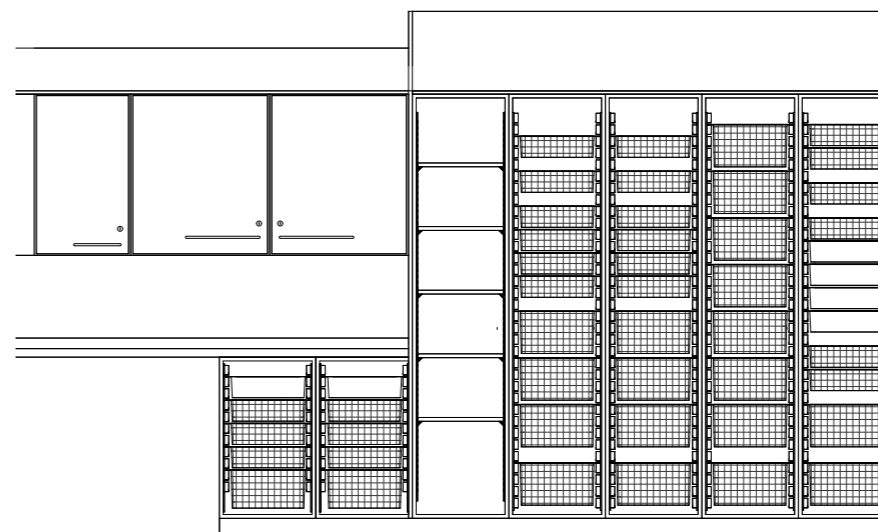
10 No. Systeméd cabinets: x2 base, x5 tall, x3 wall

Assortment of HTM71 accessories and shelves

1 No. worktop: 1850mm x 600mm, WK15 style with molded rear upstand

Fillers, sloping tops and plinth sets to suit layout shown. Open and solid doors

WAR007-4: Tall, base and wall cabinets



Clean Utility with drug storage

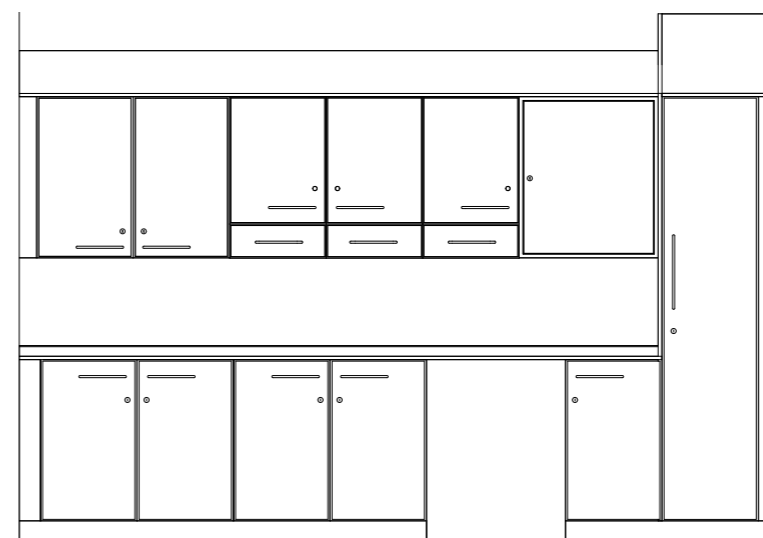


Ultimately this room plays a critical part in the well-being and care of the patient. Staff need drugs, medicines and consumables stored correctly to operate efficiently and with minimum stress.

These rooms are quite often too small for all the product needed and efficient Systeméd HTM71 storage cabinets are essential. Typical size for a medium clean utility room: 12-14m².

The photo above shows a modern clean utility room which is quite large and has enough space to double up as the ward store room. Cabinet runs can be changed to suit available space.

WAR009-2: Clean Utility with drug storage



WAR009-2: Clean Utility with drug storage 3500mm run length

12 No. Systeméd cabinets: x1 tall, x5 base, x5 wall (x3 swing glide drawers), x1 CD safe

Assortment of HTM71 accessories and shelves

1 No. worktop: 1850mm x 600mm, WK30 style with lay-on rear upstand

Fillers, sloping tops and plinth sets to suit layout shown. Solid doors

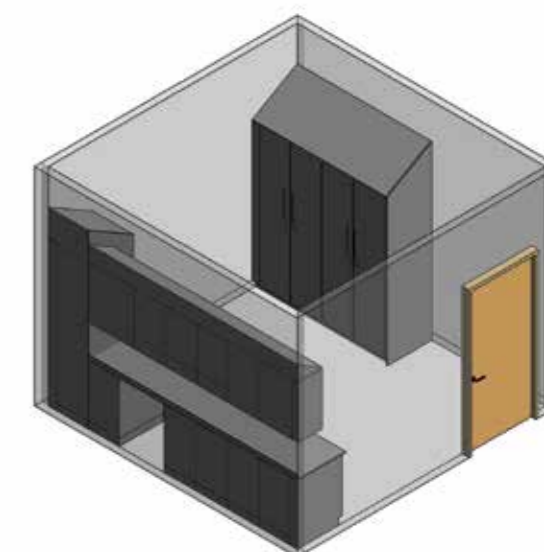
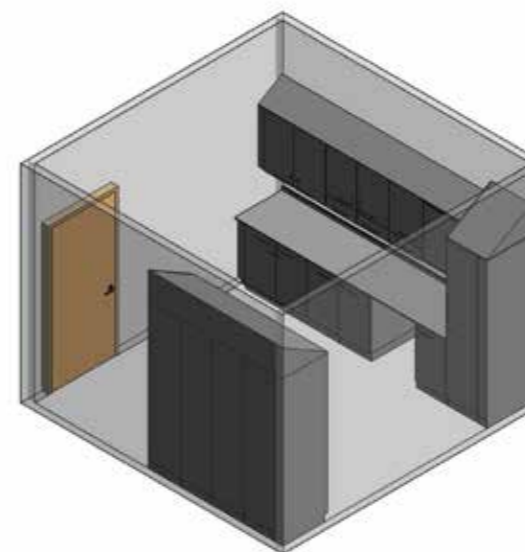
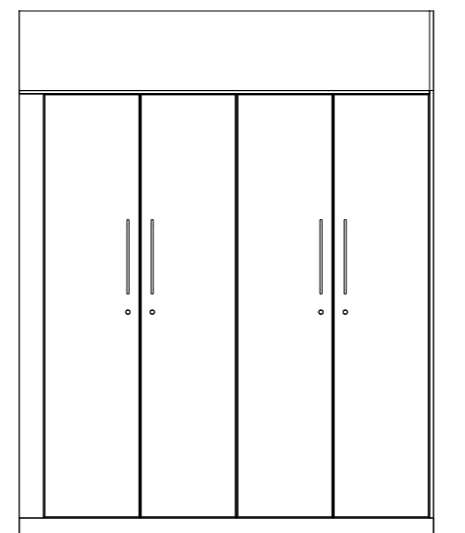
WAR009-4: Clean Utility with drug storage 1950mm run length

4 No. Systeméd tall cabinets

Assortment of HTM71 accessories and shelves

Fillers, sloping tops and plinth sets to suit layout shown. Solid doors

WAR009-4: Clean Utility with drug storage





Stirling[®]

MEDICAL and SCIENTIFIC

London

Unit 3 Crayside, Five Arches Business Estate, Maidstone Road, Sidcup, Kent DA14 5AG

☎ 020 8699 8993

North

Unit 3, Estate Road 8, South Humberside Industrial Estate, N.E. Lincs DN31 2TG

☎ 01472 267 895

🌐 www.stirlingmedical.co.uk

✉ enquiries@stirlingmedical.co.uk

 **systeméd**[®]
MODULAR STORAGE

 **esplan**[™]
PHARMACY

 **virseal**[™]
IPS & MEDICAL WALLING

Stirling Medical & Scientific Ltd. 2024. Systeméd, Esplan and Virseal are registered trademarks and remain the exclusive right of Stirling Medical & Scientific Ltd. No use of these brands or images in this book are entered into without the express written permission of Stirling Medical & Scientific Ltd.

Due to lighting conditions and the reprographic process, there may be some slight difference in colouration of the actual products in the photographs. As part of our programme of continuous improvement, Stirling Medical & Scientific Ltd. reserve the right to change and update products without prior notice.