

Room Standardisation

Hospital Improvement Programme

Clean Utilities



Providing compliant, efficient
and modern clinical environments



Clean Utilities

One of the most repeated rooms in every hospital

The hospital Clean Utility room provides a key function in the care of patients and is one of the most repeated rooms throughout every hospital.

These rooms are often too small for the medicines and consumables required to be stored and it is essential that the most efficient storage systems are utilised.

It is important that clinical stock is well organised, easy to locate and the fitted furniture and storage systems in use are easy to manage and re-stock. Getting this right will ensure that the staff are able to access everything they need quickly to make the task of caring for patients as efficient as possible.

The benefits of standardisation with Systeméd products

Assists with staff movements to different departments

Improves stock visibility and rotation with less wastage and better cost control

Enhances patient care and CQC ratings by creating a productive ward with organised stock and happier staff

Improves cleanability for infection control with less labels on doors

Future proofs your areas with specific product design features and HTM71 flexible storage modules

 020 8699 8993

 stirlingmedical.co.uk

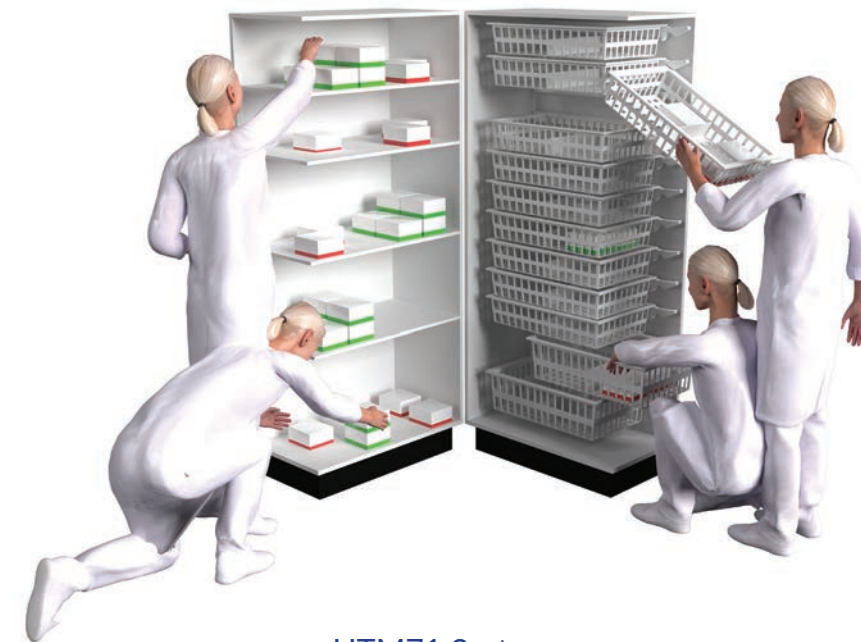
 enquiries@stirlingmedical.co.uk

Stirling Medical & Scientific Ltd Unit 3 Crayside, Five Arches Business Park,
Maidstone Road, Sidcup, Kent DA14 5AG



Design details

The Clean Utility room could be regarded as the central hub in a hospital ward and is critical to patient care and wellbeing. Standardising these rooms with modern, HTM compliant and efficient storage systems, along with Systeméd toughened glass doors, will ensure that the UK's Hospital Improvement Programme is fit for the 21st century.



HTM71 Systems

Flexible • Modular • Efficient • Compliant • Future proof

HTM71 modular sizes

It is very important that any Clean Utility room being designed today utilises the internationally recognised HTM71 600mm x 400mm module sizes for maximum storage efficiency and ergonomic stock handling.

The 400mm facing narrow/deep module provides the most storage per liner meter of wall length.

The 600mm facing wide/shallow module is more suited for narrow rooms and fits under a 600mm worktop, providing a useful 100mm service void behind for pipe runs etc.



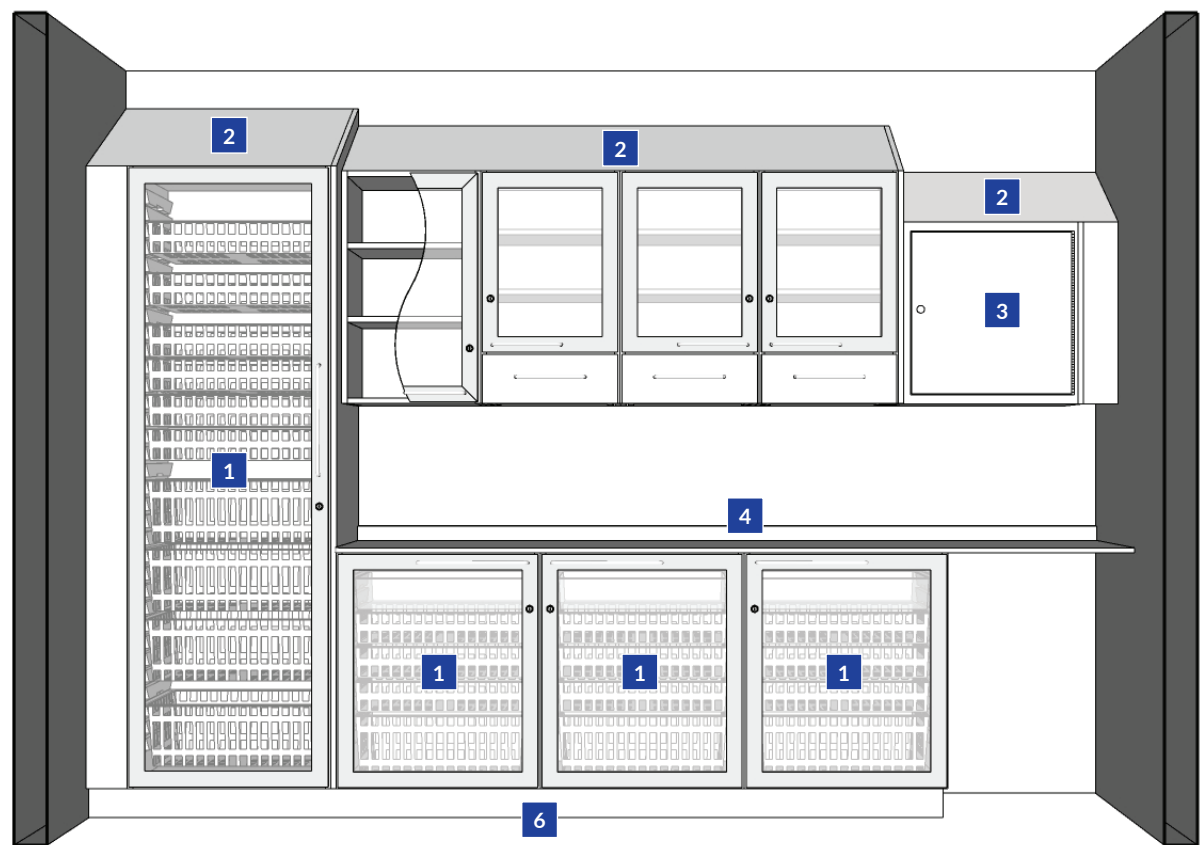
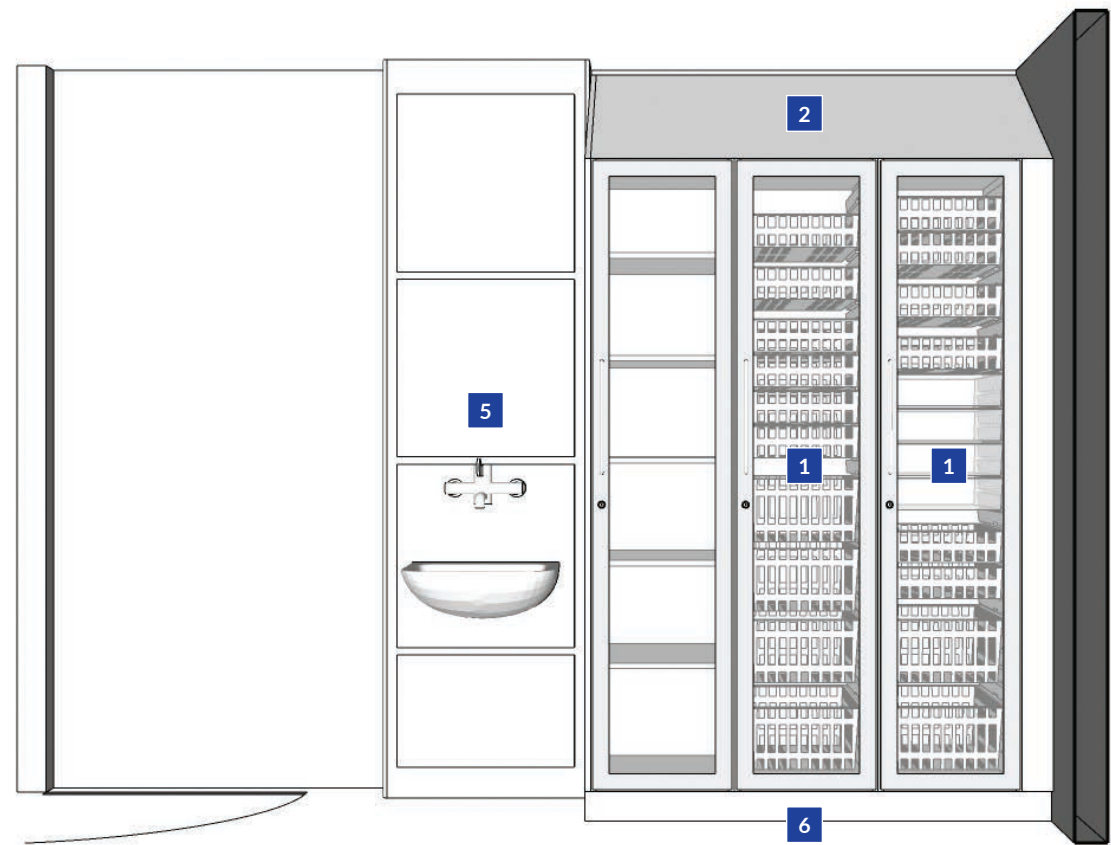
Systeméd toughened glass doors

Systeméd aluminium-framed toughened glass doors are attractive, virtually unbreakable and introduce a completely new level of staff experience to clinical spaces.

Visibility of products inside the cabinets is now clear and smaller product labels are all kept inside the cabinet making cleaning of external surfaces much easier.

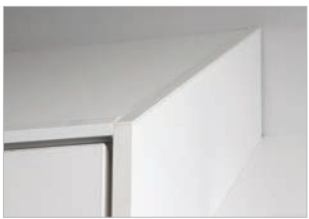
Because of the unique frame design, our standard hinges and locks can be used helping keep costs as low as possible.

Typical elevations and details



[1] Internal accessories

Systeméd HTM71 cabinets are provided with a standard configuration of internal accessory types to make the difficult task of working out the amount of trays and baskets required for the type of product being stored much easier.



[2] Sloping tops or boxed to ceiling

Tall cabinets and wall cabinets should be fitted with a sloping top or boxed vertically to the ceiling to help ensure that all surfaces are visible and allow them to be wiped clean. Systeméd sloping tops comprise a powder coated aluminium front trim to provide a neat wipe clean surface.



[3] CD cabinets (large, outer)

Traditionally, recommendations have been for the CD cabinet to be housed inside another cabinet for additional security. However, recent advice has highlighted that these can often be too small for the current requirements, especially for bigger wards and these can be supplied as a large CD unit with a single door instead. For partition walls, please use a Barrd® fixing plate to comply with current regulations.



[4] Compact grade worktops

16mm Compact grade worktops are completely impervious to water penetration making them the first choice for infection prevention teams involved in maintaining hygiene standards in this critical area. External corners can be machined to a smooth round profile for improved ergonomic performance.



[5] IPS handwash station

Most ward clean utility rooms don't need a sink and drainer to wash equipment now and instead just need a separate hand washing station. The Virseal Ultimate one-piece construction IPS Handwash stations are simple, no-nonsense units supplied from stock with thousands now in use in the UK. Available as full height and half height options.



[6] Plinth detail

It is generally considered to be more practical for the flooring to be fitted to the full room size allowing for the room to be completely contained and future proofed for possible changes some years down the line if required. This means that the cabinet plinth should be silicone sealed to the flooring surface. All Systeméd plinth is HP Laminate faced and manufactured with a WBP ply core so as to be able to withstand constant mopping when cleaning.



Locks

All Systeméd cabinets are supplied with a basic cabinet lock as standard and unless requested, all cabinet locks are supplied keyed alike per set of cabinets. Choose higher grade medicine locks for storage of medicines and drugs with option for Code locking or Barrd® 6G Swipe card access for the ultimate access control management.

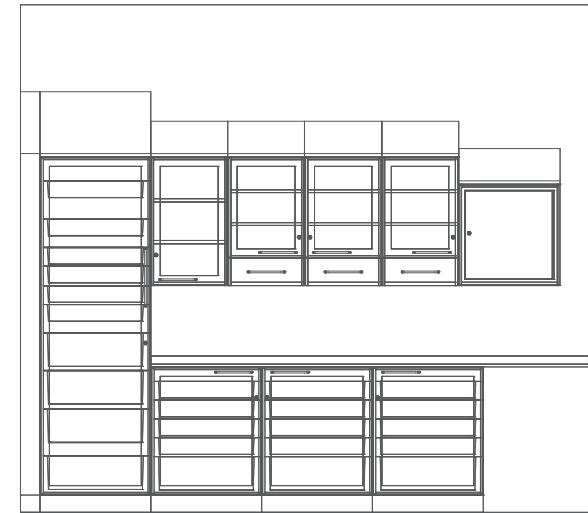


Hinges

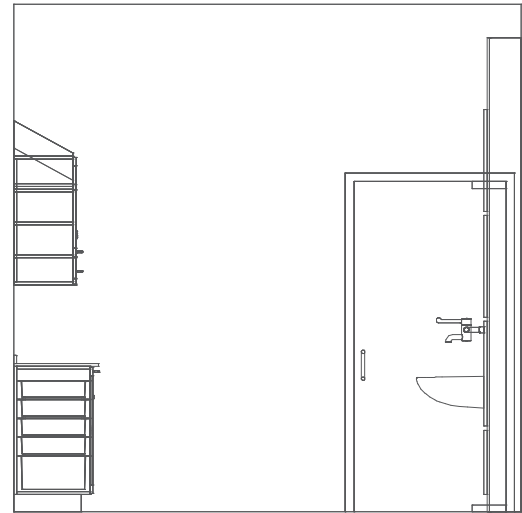
Hinges should be compliant to BS 6222-2: 2009 + A1: 2017 Level H for heavy duty use. Unlike normal kitchen cabinet hinges they allow the cabinet doors to open back fully without any strain on fixing points. The hinges have a very slim profile allowing internal accessories to be fitted at any height inside the cabinet and can be cleaned simply in accordance with infection prevention recommendations. All Systeméd base cabinets are supplied with three hinges as standard to provide additional strength and longevity.

Exemplar room layout: Clean Utility type WAR009

BIM models available from Stirling



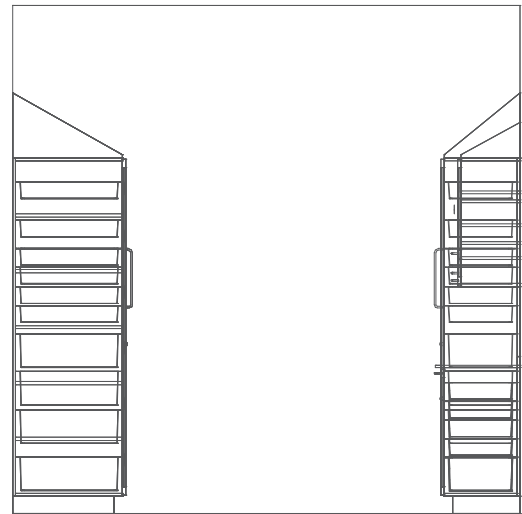
Elevation 1



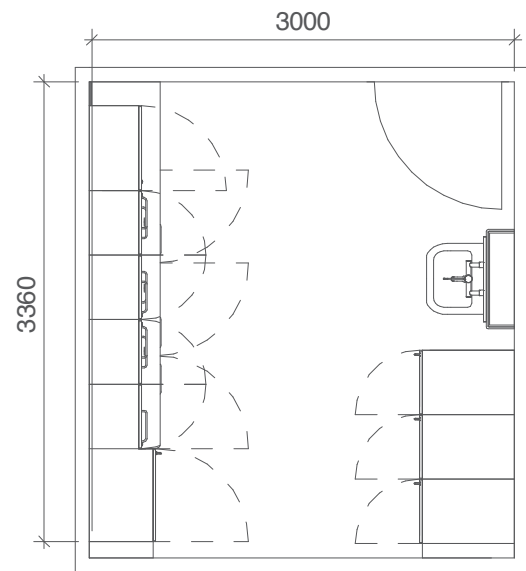
Elevation 2



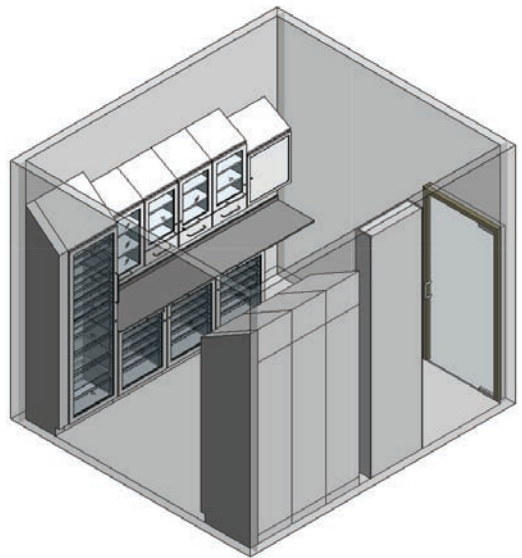
Elevation 3



Elevation 4



Elevation 5



Plan

Key design considerations

- Tall Systeméd cabinets as shown provides high density storage. Trays and baskets can be moved between cabinets and trolleys.
- Worktop area required for preparation – normally min. 1500mm required: (WKT0030)
- Swing Glide™ drop-down drawer units help to keep the worktops clear of clutter
- Space for a fridge is normally required
- Controlled drug storage is normally required: (STF0632)
- Handwash station positioned near the door – wash hands before and after preparation: (IPS1000)
- HTM71 Cabinets are either 455mm or 655mm wide facing. Orientate the cabinets to suit room shape and size: (MSC items)

ADB Code	ADB Description	ADB Group	Count
BAS0500	BASIN. Clinical. HTM Compliant 500W 400D, integral back outlet, no overflow, no tapholes. Includes IPS mounting fixings & resealing waste bottle trap. Item Code: S215401. Alternative with anti-splash fins. Item code: S0430HTSM	1	1
IPS1000	IPS HANDWASH STATION, VIRSEAL™ Ultimate Full height 700W 200D. 4no Access Panels. Suitable for WHB mounting. Item code: VIRU/28/07. Choose half height module 1280mm high, Ref VIRU/12/07 when piped supply is low level.	1	1
MSC0142	STORAGE UNIT, Modular, Tall Cabinet 655mm facing, c/w 4 x 100mm Polycarbonate Trays, 6 x 100mm ABS Baskets, 2 x 200mm ABS Baskets and Label Holders. R/H Door, Lock. HTM71. Item code: CE016121 + Sloping top.	1	1
MSC0142	STORAGE UNIT, Modular, Tall Cabinet 455mm facing, c/w 4 x 100mm Polycarbonate Trays, 6 x 100mm ABS Baskets, 2 x 200mm ABS Baskets and Label Holders. R/H Door, Lock. HTM71. Item code: CE014122 + Sloping top.	1	1
MSC0241	STORAGE UNIT, Modular, Tall Cabinet 455mm facing, c/w 7 x 100mm ABS Baskets, 4 x 200mm ABS Baskets and Label Holders. L/H Door, Lock. HTM71. Item code: CE024122 + Sloping top.	1	1
MSC0441	STORAGE UNIT, Modular, Tall Cabinet 455mm facing, c/w 5 x Shelves. L/H Door, Lock. HTM71. Item code: CE044122 + Sloping top.	1	1
MSC1141	STORAGE UNIT, Modular, Base Cabinet 655mm facing, c/w 1 x 100mm Polycarbonate Tray, 3 x 100mm ABS Baskets, 1 x 200mm ABS Basket and Label Holders. L/H Door, Lock. HTM71. Item code: CE116121.	1	1
MSC1141	STORAGE UNIT, Modular, Base Cabinet 655mm facing, c/w 1 x 100mm Polycarbonate Tray, 3 x 100mm ABS Baskets, 1 x 200mm ABS Basket and Label Holders. L/H Door, Lock. HTM71. Item code: CE114122.	1	2
MSC2541	STORAGE UNIT, Modular, Wall Mounted Cabinet 455mm facing, c/w 2 x Shelves and Swing Glide™ Drawer. L/H Door, Lock. HTM71. Item code: CE254321 + Sloping top.	1	2
MSC2542	STORAGE UNIT, Modular, Wall Mounted Cabinet 455mm facing, c/w 2 x Shelves. R/H Door, Lock. HTM71. Item Code: CE354322.	1	1
STF0632	STORAGE UNIT, Wall Mounted Controlled Drugs Safe c/w 2 x Shelves and High Security Lock. R/H Door. HTM71. Item Code: DR066312, For Partition walls included Barrd® Universal wall fixing steel plate. Item code: CDSBPU.	1	1
TAP4555	TAP, HTM Compliant Single Lever Thermostatic Clinical Mixer Tap. IPS Duct Panel Mounting Type. Item codes: Armitage Markwik: SF424682, Rada: SF404804, Horne: SF454200, Bristan: ST424819 or sensor tap options.	1	1
WKT0030	Worktop, 16mm Solid Grade Laminate, 50mm rear lay-on upstand. Size as drawn.	1	1
VOI929	Cabinet void panel, dimensions to suit 100W x 760H x 350D	1	1
VOI930	Cabinet void panel, dimensions to suit 100W x 2100H x 650D	1	1

Avoid specifying trouble!

Despite countless hours of design discussions between clinical teams, Architects and Contractors, there are still brand-new, impressive hospital buildings in the UK that are being fitted out with inadequate and non-HTM compliant fitted furniture.

A building may look good on the outside, but this doesn't mean that it will work well inside. Standard kitchen cabinets and products are not adequate for today's clinical environment and are not compliant with HTM recommendations.

Removing new cabinets before they have even been used by staff, to fit compliant modular fitted furniture instead, is an expensive mistake and a waste of resource. But it is still happening today.

Stirling Medical & Scientific Ltd have a unique showroom facility fitted out with a variety of different clinical spaces at our head office at Sidcup (just 25 minutes from London Bridge station). This provides an ideal venue to see different options, materials and finishes and discuss your project details with one of our experienced design consultants. We can also arrange for a virtual demonstration if this works better for you.

Please call us today to find out how we can help you get it right first time.



Stirling Medical & Scientific Ltd Unit 3 Crayside, Five Arches Business Park,
Maidstone Road, Sidcup, Kent DA14 5AG



Stirling[®]

MEDICAL and SCIENTIFIC

London

Unit 3 Crayside, Five Arches Business Park, Maidstone Road, Sidcup, Kent DA14 5AG

☎ 020 8699 8993

North

Unit 3, Estate Road 8, South Humberside Industrial Estate, N.E. Lincs DN31 2TG

☎ 01472 267 895

🌐 www.stirlingmedical.co.uk

✉ enquiries@stirlingmedical.co.uk

systeméd
MODULAR STORAGE

esplan
PHARMACY

virseal
IPS & MEDICAL WALLING

Made in the UK.

Stirling Medical & Scientific Ltd. 2022. Systeméd, Esplan and Virseal are registered trademarks and remain the exclusive right of Stirling Medical & Scientific Ltd. No use of these brands or images in this book are entered into without the express written permission of Stirling Medical & Scientific Ltd.

Due to lighting conditions and the reprographic process, there may be some slight difference in colouration of the actual products in the photographs. As part of our programme of continuous improvement, Stirling Medical & Scientific Ltd. reserve the right to change and update products without prior notice.