



Setting the standards for
specialist clinical areas



Contents

Room layout considerations	3
Theatre store	5
Catheter laboratory	7
Anaesthetic rooms	9
Pharmacy	11
Endoscopy	13
Pathology laboratory	15
Consulting rooms	17
Control room	19
Reception area and nurse bases	21
Clean utility	23
Beverage area	25
Sluice	25
Ward store room	27
Children's ward	27
A & E Resuscitation	29
Storage of medicines	30
Fluids storage	31

Design information

Room layout considerations



Sloping tops to assist with infection control

- Standard 600mm deep worktop and 450mm deep base cabinet provides a 100mm void for services.
- 100mm filler recommended when cabinet with accessories is placed next to a wall. Allows door to open more than 90° improving access to accessories.
- Most efficient layout design uses opposite walls. Avoids difficult access in corner areas.
- Accessories can either be supported by a support wall system or telescopic runners. The support wall system provides the most economical storage solution suitable for all accessories but not recommended for heavy items (e.g. fluid bags).
- Telescopic runners provide 100% extension support and are really essential for heavy items like fluid bags. Also used for some of the drugs and pharmacy storage cabinets leaving both hands free for accessing items.
- The 455mm facing cabinet is more efficient for wall space/storage capacity but projects further into the room. The 655mm wide cabinets are more suitable in small/narrow rooms using a standard 600mm or 500mm depth worktop.
- For standard 500mm or 600mm deep worktops, use 350mm deep wall cabinets (e.g. W40/30, W60/30). 450mm deep wall cabinets if required would normally need to be positioned over a 700mm deep worktop.



Telescopic runners



Support wall system

Infection control

In view of greater emphasis being placed on infection control problems, consider sloping tops or boxing to ceiling above tall units and wall cabinets.

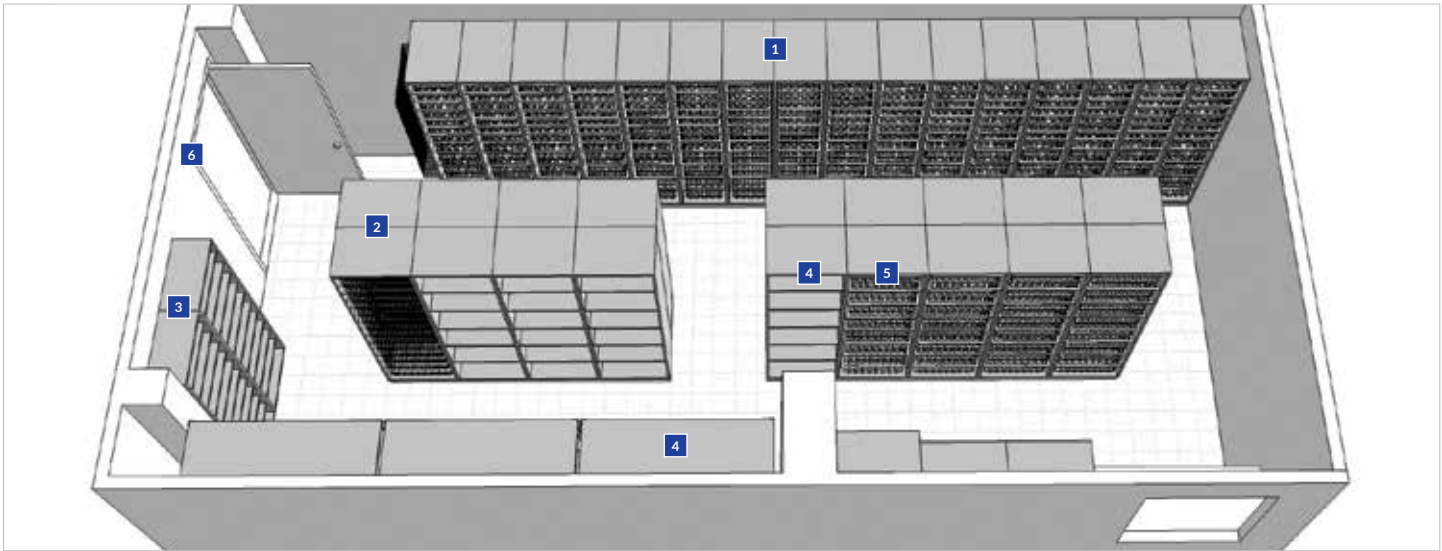


Theatre store



Considerable savings can be made when stock is organised and correctly rotated. Make the task easier with Systeméd components. Take into account theatre locations and staff movement patterns. Are all the items able to be stored in one central area or is there only a cluster of smaller storage areas available? A recent audit of stock in a major hospital theatre store found some items over five years past the use by date!

Cabinet examples



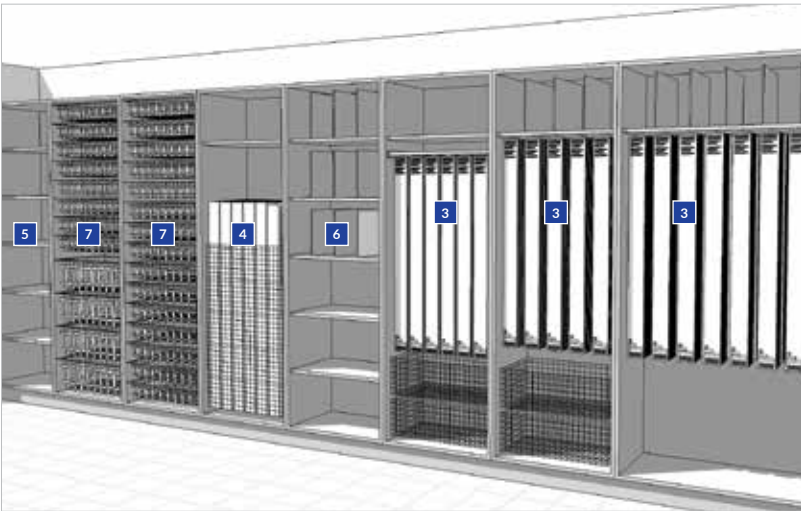
- [1] Assortment of tall open fronted cabinets for standard stock T60, T40 (CE01, CE02, CE03, CE04, CE09)
- [2] Prosthesis storage cabinets T60, T40 (CE08)
- [3] Sutures cabinet T60, T30 (CE04,CE10)
- [4] T60, T40 (CE04) tall cabinets and longspan shelving for bulky items and fluid boxes
- [5] Cabinets for decanted fluids T60, T40 (CE05)
- [6] Allow for spare capacity for holiday periods (additional stock)



Having equipment well organised and in exactly the right place can make the difference between life and death in this important area of the hospital. Systeméd components have been designed with professional help from Consultants to make this room as efficient as possible.

Cabinet examples

- [1] Consider type of holder for cabinets (A, B or C)
- [2] Consider quantities to be stored and space needed around equipment
- [3] Tall cabinet for hanging catheters (specify type of holder) T60, T40, T100 (CE07)
- [4] T60/Tilt bin cabinet for boxed catheters. Bin tilts forward to access catheter boxes
- [5] Tall shelf cabinets for bulky items, and regular boxes T60, T40 (CE04)
- [6] Shelf dividers for balloon boxes
- [7] Tall cabinets for accessories T60, T40 (CE01, CE02, CE03, CE05, CE08)
- [8] Consider requirements for controlled drugs
- [9] Consider worktop and sink requirements
- [10] Consider fridge requirement, size and position (not shown)
- [11] Consider sloping tops or boxing to ceiling
- [12] Consider door type (open, standard, glass or tambour)
- [13] Consider also wall mounted catheter support or mobile catheter storage trolleys for transport of catheters from store to bedside – ask for a copy of our Trolley Catalogue





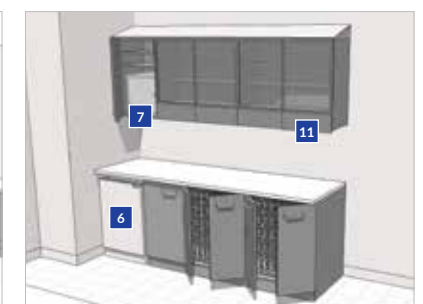
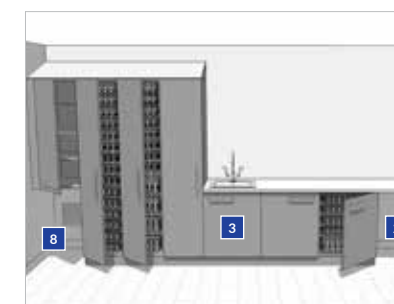
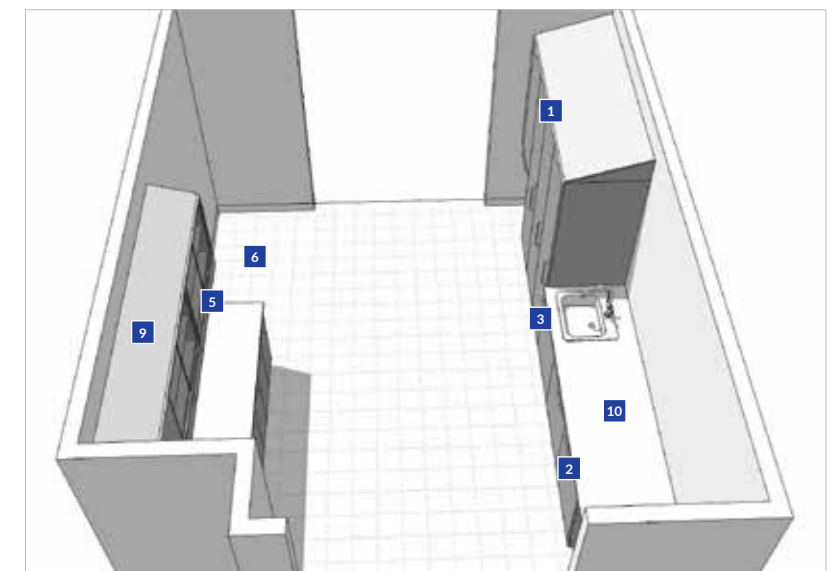
Anaesthetic rooms



It is important to design Anaesthetic rooms in consultation with Theatre staff to take into account existing work practises and layouts and any improvements needed. Space to move around the patient and to access necessary drugs and equipment can be quite difficult with the number of persons in the room during a procedure and efficient storage systems are essential.

Cabinet examples

- [1] Tall cabinets for consumables and fluids including plain shelf cabinets for bulky items T60, T40, T30 (CE01, CE02, CE03, CE04, CE05)
- [2] Under worktop storage in cabinets B60, B40, B40/40, B60/ DR (CE11, CE12, CE14), or 1 or 2 Section Systeméd multipurpose trolleys (ref. 306100 and 306200)
- [3] Sink base cabinet with removable back for access to services B60/SB (CE23).
- [4] If using base cabinets consider double doors or tambour door option to enable patient trolley to get closer to bench side
- [5] Glass fronted wall cabinets to help staff see items stored (sliding or hinged options)
- [6] Consider positions for fridge, power, gas outlets, bin and anaesthetic machine
- [7] Drugs cabinet with Controlled Drugs inner W40/30 DR, W60/30 DR, (DR24, DR54, DR15, DR35, DR55, DR75)
- [8] Consider air flow requirements (min. 500mm clear space)
- [9] Consider sloping tops or boxing to ceiling
- [10] Consider worktop material
- [11] Swing-glide under unit drawers





Pharmacy

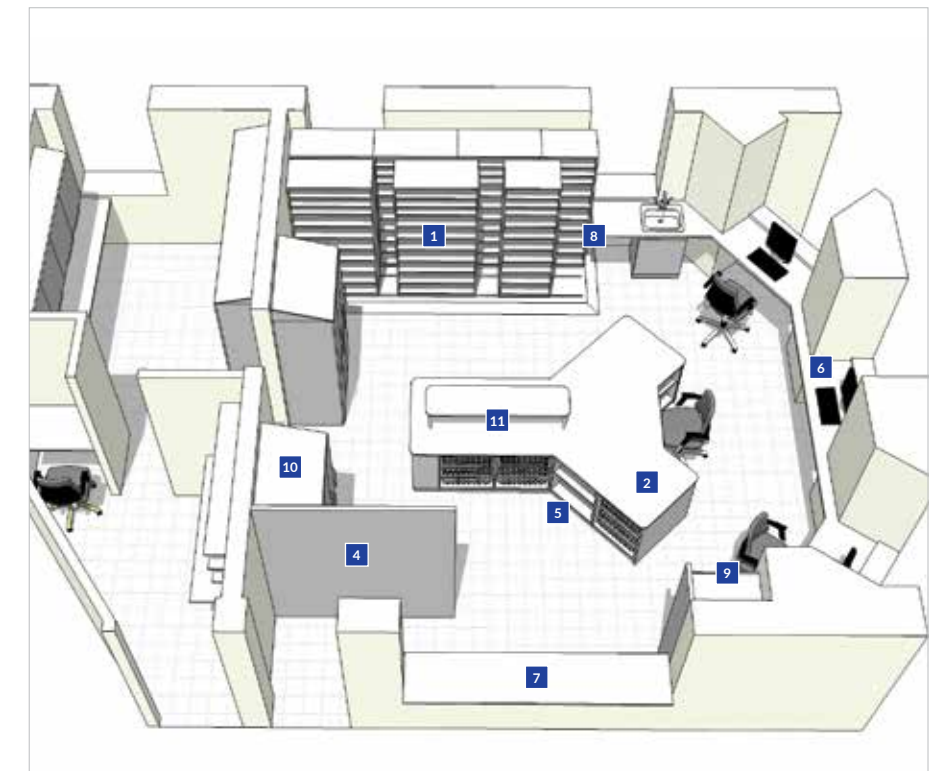


As the nerve centre of a hospital, this area needs to be functional and efficient with clear workflows. Consider colour options to help create a pleasant working atmosphere. Larger hospital improvements to the pharmacy will often include the installation of a robot and planning will be needed to create benching and cabinets to help maximise the benefits available.

Cabinet examples

Esplan storage units DR03, DR13, DR23 provide efficient storage of all drugs and non robotic stock with extending shelves, sloping shelves and plain shelf options. Include shelf labelling and dividers for organised storage.

- [1] Esplan Pharmacy storage units with telescopic and sloping shelves. Telescopic dispensing shelf option
- [2] Solid grade laminate benching allows for shaped bench tops and rounded corners to island benches
- [3] Harley bin unit cabinet
- [4] Privacy screen for consultation areas
- [5] Under bench storage cabinets B60, B40 B60/DR Units, B60/HB (CE11, CE13, CE14)
- [6] Printer/labelling machine positions
- [7] Serving hatch and bench design
- [8] Slide-a-side system allows for greater density of storage if space limited
- [9] Controlled drugs storage
- [10] Fridge positions
- [11] Overbench storage if required
- [12] Open pigeon-hole unit for ward pharmacy bags





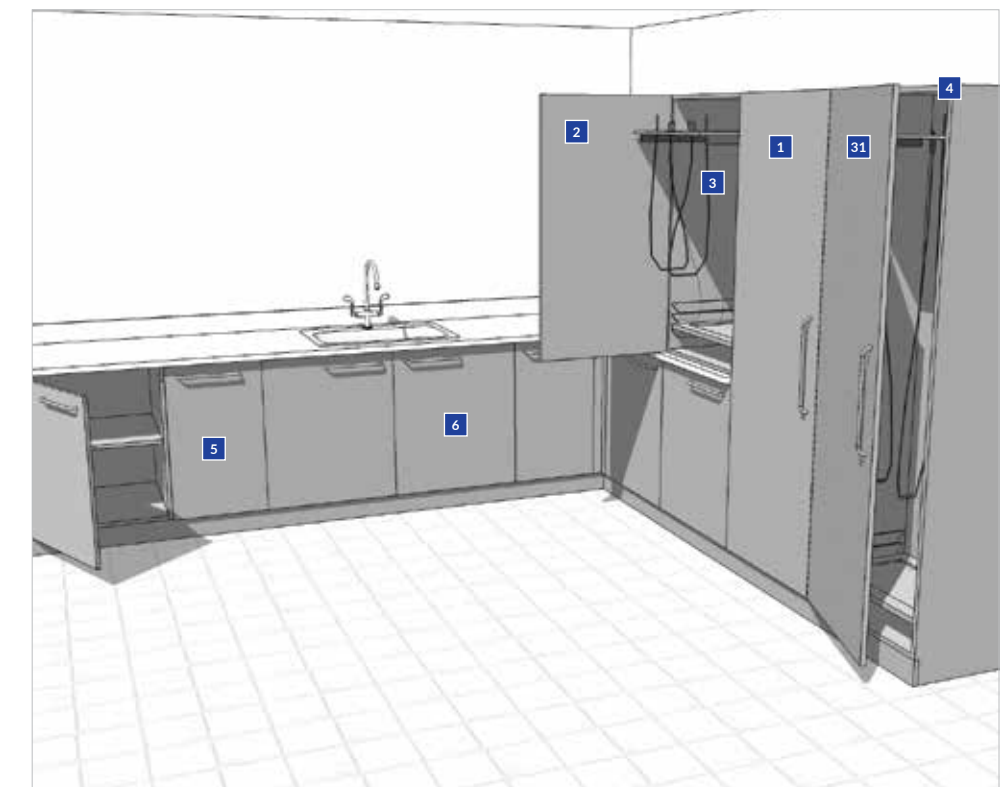
Endoscopy



Systeméd endoscope cabinets are designed to keep cleaned endoscopes safe and dry ready for sterilisation before the next procedure. The most popular option is the 655mm wide facing cabinet which also includes a holder to the rear of door allowing for storage of up to six colonoscopes. A special large size Corian sink bowl is available for endoscope washing.

Cabinet examples

- [1] Tall Endoscope storage cabinet with telescopic holder and drip tray. T60, T40 (CE06)
- [2] 1200mm high worktop or wall mounted cabinet for smaller endoscopes W60 (1200) (CE21)
- [3] Specify type of endoscope to be stored (e.g. Olympus, Pentax etc.) Different storage platforms to suit type of scope
- [4] Cabinet venting available if required (e.g. for Cidex solution washing)
- [5] Corian or Surell worktop recommended with special sink bowl for endoscope washing. Bowl size: 800 x 500 x 200mm deep. Use a 1000mm wide sink base cabinet
- [6] S200 range doors and carcasses are essential for endoscopy wash areas





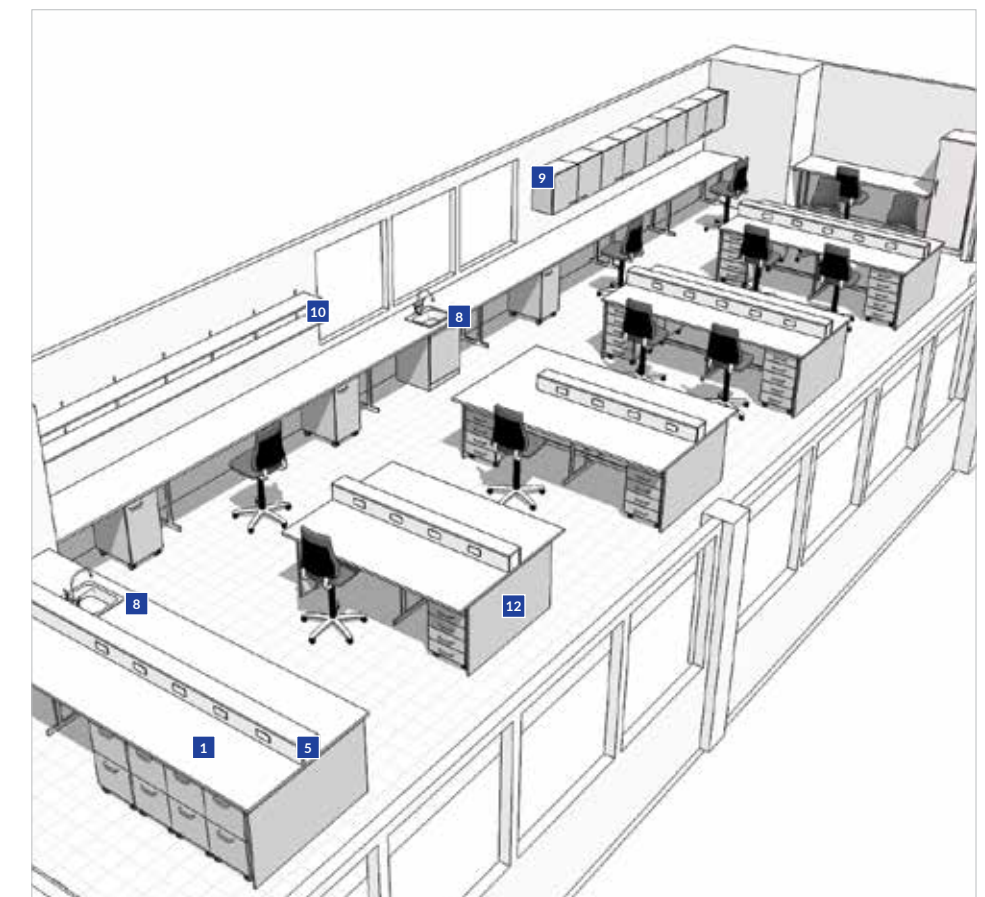
Pathology laboratory



The hospital laboratory can often be overlooked in importance with staff working long and hard in often cramped conditions which do not conform to current containment standards. Systeméd components will greatly assist in bringing new standards to these areas.

Cabinet examples

- [1] Solid grade laminate worktops (e.g. Trespa Athlon/Toplab or Formica Chemtop) recommended for the laboratory environment
- [2] Special IPE framework design where additional rigidity is required (e.g. cutting benches)
- [3] Bolting to floor may be necessary for additional rigidity
- [4] Mobile base units, create flexibility and are more efficient for cleaning B60, B40 (CE12, CE13, CE14)
- [5] Central service upstand in either Trespa or standard trunking material
- [6] Spacer frames for island benches
- [7] Radiused external corners
- [8] Grade 316 stainless steel or fire clay sink bowls
- [9] Wall mounted cabinets W40/30, W60/30 (CE15, CE25 etc.)
- [10] Wall shelving
- [11] Individual worktop support
- [12] End cladding panel





Consulting rooms



Manhattan Cherry door fronts compliment the interior furnishings of Consulting rooms in Harley Street, London without sacrificing efficient storage solutions

Consulting rooms should be well equipped, good looking and functional. Achieving the right balance will greatly compliment the Consultants' task and help the patient relax with confidence.

Cabinet examples

Consulting room sink base cabinet

Specially developed sink base cabinet for Consulting rooms.

Features include

- S200 laminate faced ply core carcass and door for durability and water resistance
- Moulded Corian sink bowl with no overflow for infection control
- Waterfall front and side edges to retain water
- Optional moulded rear upstand with height to suit taps chosen
- Attractive extended side panel design to floor
- Removable inner back panel for access to services
- Choice of two depths, 600mm or 500mm if space is limited
- Range of attractive laminate finishes available
- Infection control approved

Consulting room storage cabinet

Attractive 1000mm wide tall cabinet with double doors and lower Systeméd trolley storage area to create a clean and neat consulting atmosphere.





Control room



A working environment involving intensive concentration at times so consider colour schemes or wood effect cabinets to create a relaxing environment.

Cabinet examples

- [1] Marmoleum inlay worktop with RW maple bullnose front edge
- [2] Mobile drawer base cabinets L60, L40, L40/40 (CE13, CE14)
- [3] Wall shelves with front lip to hide shelf bracket
- [4] Large computer cabinet with ventilation slots and tambour door
- [5] Mobile X-ray storage base cabinet





Reception area and nurse bases



First impressions count! We supply reception desks and nurse bases from standard modular stock components through to impressive bespoke reception areas to compliment the Architects design flair.

Cabinet examples

Compliance (DDA)

Full provision is made for DDA in all our designs including access points, writing tops, induction loops and supportive signage.

Ergonomics

Doctors, patients, sisters, ward clerks, the old, the young, the able and the disabled all have to coexist at what is the nerve centre in any Health Care department. Great care has gone into the ergonomics of our designs to provide the best all round solution to this challenging environment.

Materials and Aesthetics

Wide range of finishes available to suit ward colour schemes and budgets. A new desk does not need to be expensive to make a welcome difference to first impressions.

Infection Control

With the many people that visit the Reception desk and Nurse base it is important that provision is made for papers and files to be stored correctly allowing surfaces to be cleaned thoroughly.

Services Integration

Unique to the Health Care market is the intensity of the requirement for services integration. Multiplepower, telephone, data, alarm and nurse call systems have to be provided for.





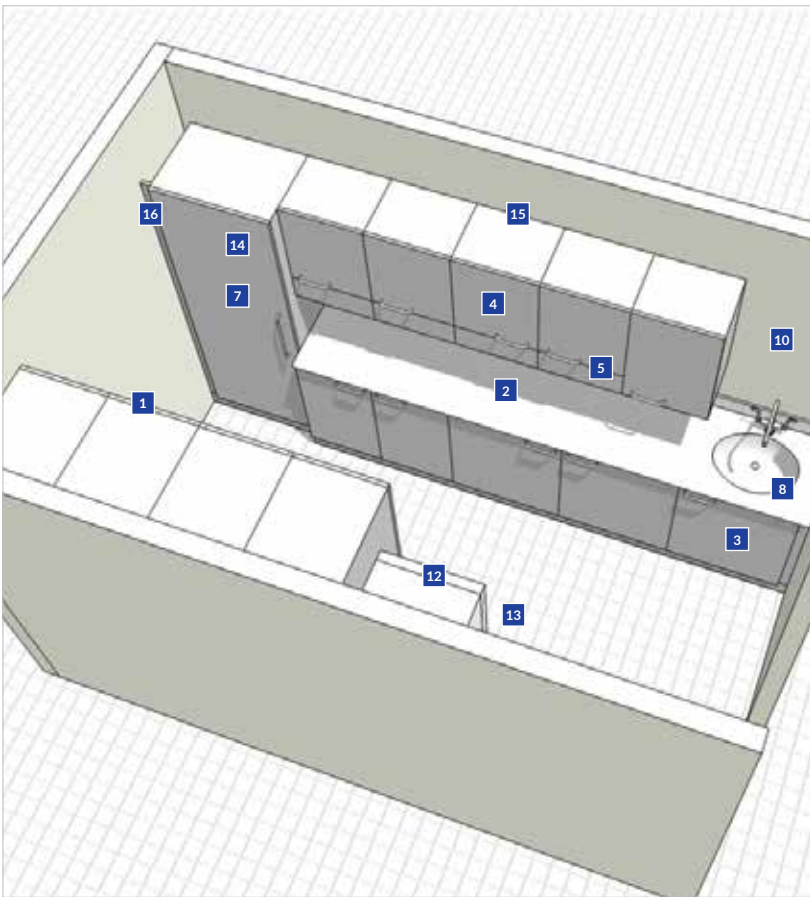
Clean utility



Staff need drugs and consumables stored correctly to operate efficiently and with minimum stress. These rooms are quite often too small for all the products needed and efficient HTM71 storage cabinets are essential.

Cabinet examples

- [1] Main storage cabinets T40, T60 (CE01, CE02, CE03, CE04, CE05) to suit room
- [2] Worktop area (normally min. 1500mm required)
- [3] Base storage cabinets B60, B40, B40/40 (CE11, CE12, CE13)
- [4] Drugs cabinets W40/30 DR, W60/30 DR, (DR04, DR05). Consider also if controlled drugs inner cabinet required (DR06)
- [5] Swing-glide under unit drawers help keep worktop clear of clutter
- [6] Bench mounted cabinet W60 (1200) (CE20, DR07)
- [7] Tall drugs storage cabinet T60 DR (DR01)
- [8] Wash hand basin (in top or IPS Panel)
- [9] Catheter/stent storage rack
- [10] Storage space over sink
- [11] Bin space
- [12] Fridge space (worktop or floor mounted)
- [13] COSH cabinet
- [14] Internal lights (power requirement and remote alarm)
- [15] Sloping tops or boxing (infection control)
- [16] Fillers





Beverage area

Choose standard shelf cabinets and laminate or solid grade laminate worktops for staff areas. Sink bowls should include a drainer (inset or lay-on types). Allow for appliance positions including dishwasher if needed.

Cabinet examples

- [1] Sink base cabinet B60, B5 (CE23)
- [2] Drawer unit B60, B40, B40/40 (CE14)
- [3] Wall cabinets (Photo shows double door version) W40/30 (760), W40/30, W60/30 (CE15, CE30)
- [4] Under unit lighting
- [5] Fridge/appliance space
- [6] Open shelving
- [7] Conventional Range cabinets often used in this area
- [8] 1000mm wide tall full height compact storage unit available with built-in sink, shelves, microwave and fridge space behind double doors



Sluice

Photograph shows how effective colour can be to improve this important but not very desirable room! Consider S200 range cabinets for under sink areas.

Cabinet examples

- [1] Tall cabinet with shelves T40, T60 (CE04)
- [2] Base cabinets with shelves B60, B40, B40/40 (CE13)
- [3] Laminate or trespa worktops
- [4] Wall cabinets W60/30, W40/30 (CE15)
- [5] Deep sluice sink bowl and drainer
- [6] Open wall shelving



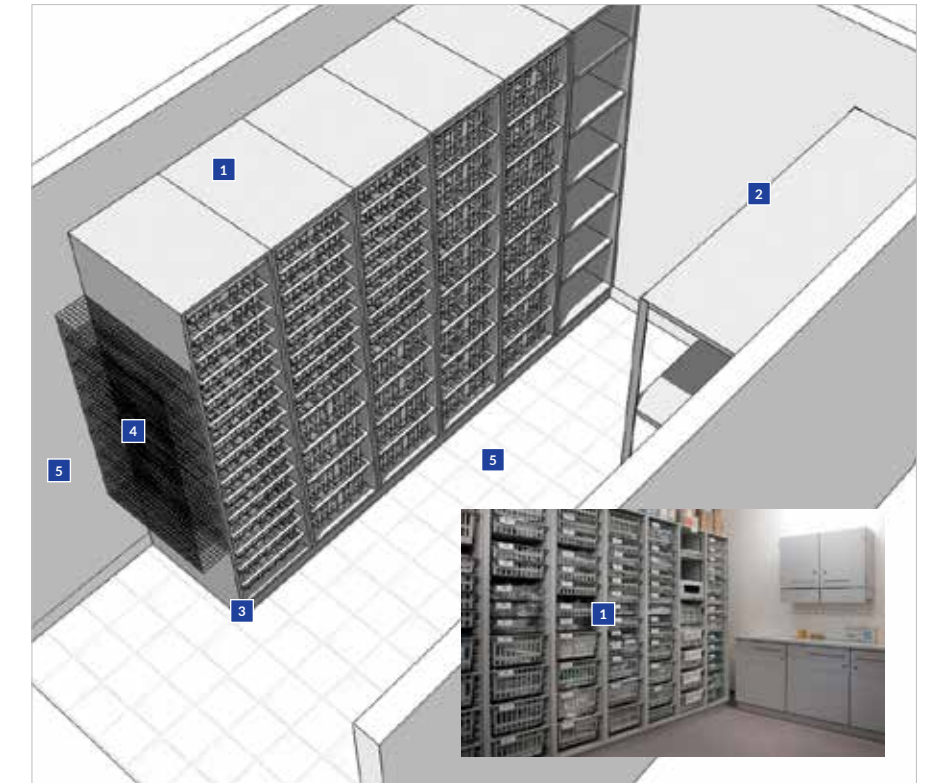


Ward store room

Most wards will have a room for the storage of bulky boxes and equipment etc.

Cabinet examples

- [1] Combination of tall open fronted T40 and T60 style cabinets with assortment of accessories and shelves for different sized items. (Cabinet types CE01, CE02, CE03, CE04, CE05)
- [2] Longspan shelving bays for bulky items/boxes
- [3] Consider cabinets on lockable castors for ward moves and cleaning
- [4] Catheter rack for small catheters
- [5] Consider space for ward trolleys/patient hoist



Children's ward

It is amazing to see how a dull corner can be transformed to a stimulating and pleasant environment with the aid of Systeméd Jump range cabinets.

Cabinet examples

- [1] Jump range colours are from Egger colour range (Yellow, Royal Blue, Green, China Red) standard worktop colour is Yellow
- [2] Door sizes designed to suit HTM71 cabinets so inner tray and basket systems can still be used to maximise storage
- [3] Cabinet colour can be tailored to suit client emphasis. This client wanted all the wall cabinets to be in blue to create a part adult atmosphere.
- [4] Coloured end cladding panels (carcases in standard light grey colour)





A & E Resuscitation

Another critical part of the hospital where items need to be stored efficiently. A very demanding environment and Systeméd components have been designed to help meet emergency situations.

Cabinet examples

- [1] Open fronted cabinets to aid visual access and rapid stock retrieval T60, B60, B40 (CE01, CE05, CE11, CE12, CE13)
- [2] Open pigeon-hole slot wall cabinets for notes and papers W40/30 PH (CE15)
- [3] Under unit shelf to help keep worktop clear and clean
- [4] Catheter rack for small catheters
- [5] Consider the requirement for equipment charging. Cabinets can be supplied with multiple power outlet trunking (not pictured)



Drugs storage

Systeméd Controlled Drugs safes are designed to meet and exceed the requirements of the 'Misuse of Drugs' (Safe Custody) Regulations 1973 and the testing of BS2881: 1989. Cabinet sizes are designed to suit placement inside outer cabinets if required.

Contrary to popular belief, regulations state that 'Nothing shall be displayed outside a safe or cabinet to indicate that drugs are kept inside it'. Alarm lighting if required should therefore be positioned in a remote location. A special security lock is available with electrical terminal connection as an option.

Cabinets must be anchored to a solid wall if at all possible. A through-wall fixing plate is available to order for hollow partition walls (state thickness of wall).



Storage of medicines

Please note that the information given below is provided as a guide and with reference to current regulations and legislation and also drawing on experience of the practical application of these requirements in the real environment. It is important that persons responsible for the storage of drugs are aware themselves of the requirements under the law.

Security standards

Security Level 1

There is a full range of Systeméd medicine storage cabinets available to suit the type and quantity of medicines to be stored. Add 'DR' to cabinet code to upgrade security to Level 1 requirements with a high security lock. Cabinets should be sited in location where there is continuous surveillance or manning and in a room that is used for medical purposes.

Security Level 2

Dangerous drugs (controlled crugs) cabinets are available in 4 standard stock sizes with other sizes available to order. Although it is normally preferred to locate a controlled drugs safe inside another cabinet, the Systeméd DR06 cabinets are designed to meet and exceed the requirements of BS2881 and can be positioned on their own if needed. Systeméd controlled drugs cabinets are not supplied with external indicator lights.

Regulations state that 'Nothing shall be displayed outside a safe or cabinet to indicated that drugs are kept inside it' (Misuse of Drugs [Safe Custody] Regulation 1973). Alarm systems should be designed to give an indication of entry to a centrally monitored point (e.g. Nurse base or over doorway) and cabinets can be supplied with a spare electrical terminal to facilitate this as an option.

Epidural administered drugs

Recent advice from the National Patient Safety Agency has highlighted the possible danger from storing drugs administered the epidural route with drugs administered by intravenous or other routes.

Recommendations include: "Healthcare organisations should review their medicines management procedures to make sure that epidural infusions are not being stored alongside intravenous infusions. Epidural infusions containing controlled drugs may be stored in the standard controlled drugs cupboard providing intravenous infusions containing controlled drugs are not stored in the same cupboard."

Positioning/fixing

Controlled drugs cabinets should be positioned so that they can be bolted to a wall of solid construction. Where this is not possible a welded plate is available for bolting through walls.

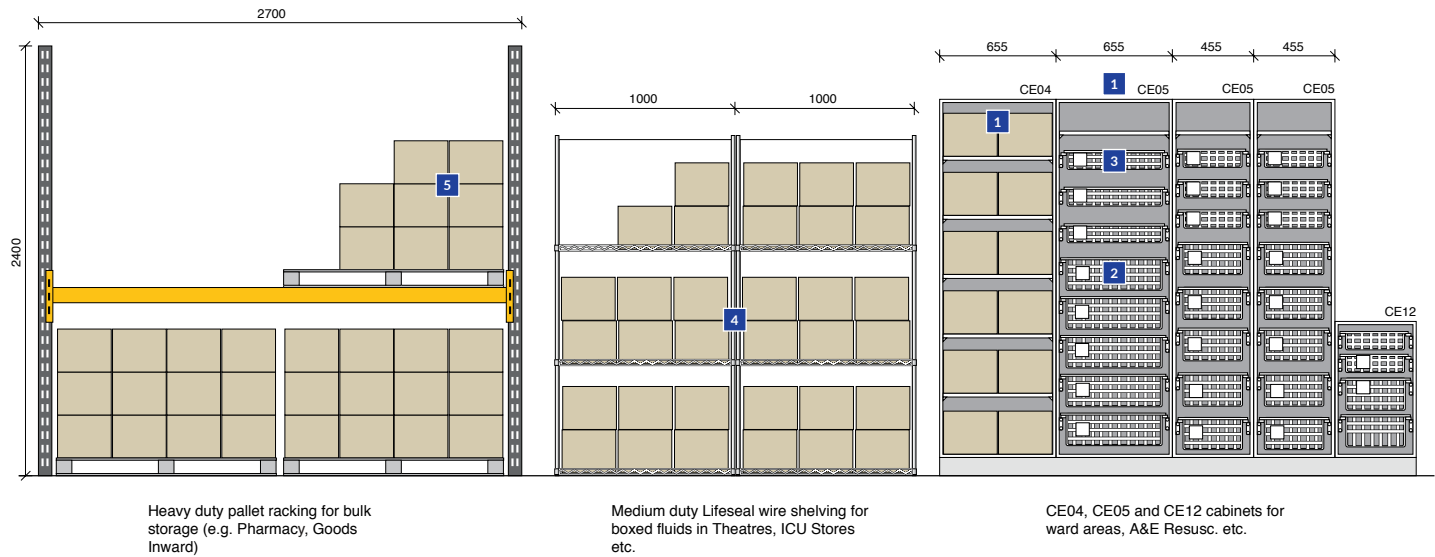


Fluids storage

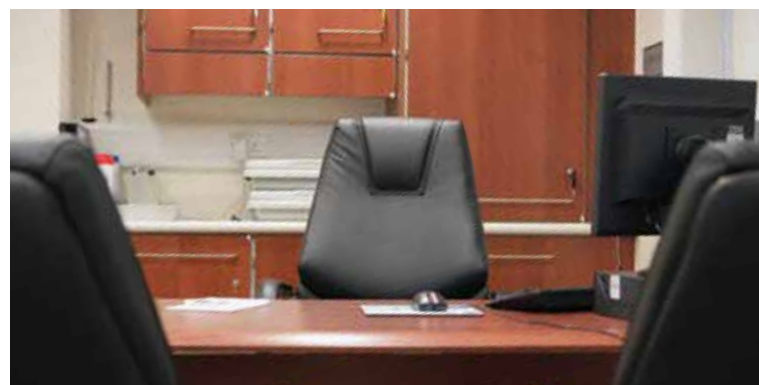


Fluids...stored in boxes or decanted? This is a good question. It depends on where you store them (e.g. clean area or store room), staff levels, space available and quantities of fluids needed. Heavy weights are involved and separate storage is required for fluids with potassium. Recent advice highlights hygiene problems with boxes in clinical rooms.

Cabinet examples



- [1] Tall fluids storage cabinet with wire baskets and telescopic runners for decanted fluids. Allows for the heavy weight associated with fluid bags to be handled with ease T60, T40 (CE05)
- [1] Deep and shallow wire baskets
- [1] Top shelf
- [1] For fluids kept in boxes, consider T60, T40 (CE04) cabinets or Longspan shelving
- [1] Heavy duty pallet racking for bulk fluid storage



Stirling®

MEDICAL and SCIENTIFIC

London

Unit 3 Crayside, Five Arches Business Estate, Maidstone Road, Sidcup, Kent DA14 5AG

☎ 020 8699 8993

North

Unit 3, Estate Road 8, South Humberside Industrial Estate, N.E. Lincs DN31 2TG

☎ 01472 267 895

🌐 www.stirlingmedical.co.uk

✉ enquiries@stirlingmedical.co.uk

 **systeméd®**
MODULAR STORAGE

 **esplan™**
PHARMACY

 **virseal™**
IPS & MEDICAL WALLING

Stirling Medical & Scientific Ltd. 2020. Systeméd, Esplan and Virseal are registered trademarks and remain the exclusive right of Stirling Medical & Scientific Ltd. No use of these brands or images in this book are entered into without the express written permission of Stirling Medical & Scientific Ltd.

Due to lighting conditions and the reprographic process, there may be some slight difference in colouration of the actual products in the photographs. As part of our programme of continuous improvement, Stirling Medical & Scientific Ltd. reserve the right to change and update products without prior notice.